

SKOOKUM®

Guaranteed Tough Since 1890

Shackle Products



No. 263
Screw Pin Shackle Eyed Pin
Available 1/2" - 3"



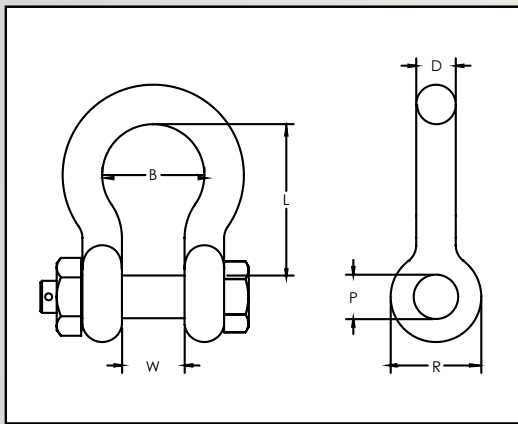
No. 264
Screw Pin Shackle
Pin Hex Head
Available 1/2" - 2"



No. 320
Safety Pin Shackle
Available 1/2" - 4 1/2"



No. 330
Towing Shackle Double
Nut with Locking Bolts
Available 7/8" - 4 1/2"



Alloy Anchor Shackles

- Skookum Gold Standard Forgings
- All sizes are forged, quenched and tempered
- Enamel, zinc plate or galvanized finish
- Custom sizes & materials (stainless steel, etc.) are available upon request
- Superior strength, hardness & uniformity
- Size & working load permanently imprinted
- Material heat codes imprinted on bale and pin

SPECIFICATIONS

SIZE (INCHES)	WLL ¹ (TONS)	WEIGHT ² (LBS)	STOCK #			
			#263	#264	#320	#330
1/2	5.00	1.00	626304	626404	632004	633004
5/8	7.00	2.00	626305	626405	632005	633005
3/4	9.00	3.00	626306	626406	632006	633006
7/8	12.00	4.00	626307	626407	632007	633007
1	16.00	5.50	626308	626408	632008	633008
1 1/8	18.00	8.00	626309	626409	632009	633009
1 1/4	21.00	11.00	626310	626410	632010	633010
1 3/8	26.00	14.00	626311	626411	632011	633011
1 1/2	31.00	18.00	626312	623412	632012	633012
1 5/8	35.00	23.00	626313	626413	632013	633013
1 3/4	41.00	30.00	626314	626414	632014	633014
2	52.00	42.00	626316	626416	632016	633016
2 1/4	67.00	57.00	626318	623418	632018	633018
2 1/2	82.00	85.00	628320	626420	632020	633020
2 3/4	104.00	100.00	626322	626422	632022	633022
3	117.00	136.00	626324	626424	632024	633024
3 1/2	150.00	256.00	—	—	632028	633028
4	175.00	310.00	—	—	632032	633032

DIMENSIONS (IN)

D	W	L	B	R	P
0.63	0.81 ± .125	1.88 ± .125	1.28	1.44	0.63
0.75	1.06 ± .0625	2.50 ± .125	1.75	1.63	0.75
0.88	1.25 ± .0625	2.88 ± .25	2.00	1.84	0.88
1.00	1.44 ± .0625	3.31 ± .25	2.28	2.13	1.00
1.13	1.69 ± .0625	3.75 ± .25	2.69	2.25	1.13
1.13	1.81 ± .0625	4.25 ± .25	2.94	2.63	1.25
1.25	2.03 ± .0625	4.63 ± .25	3.25	3.00	1.38
1.38	2.25 ± .125	5.25 ± .25	3.63	3.25	1.50
1.50	2.38 ± .125	5.75 ± .25	3.88	3.44	1.63
1.63	2.63 ± .125	6.25 ± .25	4.63	4.00	1.75
1.75	2.88 ± .125	7.00 ± .25	5.00	4.25	2.00
2.00	3.25 ± .125	7.75 ± .50	5.75	5.00	2.25
2.25	3.88 ± .125	9.25 ± .50	6.50	5.50	2.50
2.50	4.13 ± .125	10.50 ± .50	7.25	5.88	2.75
2.75	4.50 ± .125	11.50 ± .75	7.50	6.25	3.00
3.00	5.00 ± .125	13.00 ± .75	7.88	6.50	3.25
3.50	5.75 ± .25	15.00 ± .75	9.50	8.00	3.75
4.00	6.55 ± .25	17.00 ± .75	11.00	9.25	4.25

¹Ton=2,00lbs - Design factor is 5 to 1.

²Weights vary slightly with style of shackle pin used. Specifications subject to change without notice.

 **WARNING:** Misuse of rigging equipment can result in serious injury up to and including loss of life. Only competent trained professionals should use Skookum products. Thoroughly inspect all equipment before each and every use and never use damaged or worn products. Skookum disclaims any liability resulting from the misuse of its products. Please take a moment to carefully review our maintenance and warnings page for more information.