

INTRODUCING A NEW LIGHTWEIGHT LINE OF LIFTING CLAMPS FROM **J.C. RENFROE**

SAME QUALITY AND DURABILITY, JUST LIGHTER IN WEIGHT



IT'LL TAKE A LOAD OFF YOUR MIND

THESE PRODUCTS ARE
PART OF THE INSTOCK AND
QUICKSHIP PROGRAMS



NEW SOLUTIONS FOR NEW CHALLENGES

At J.C. Renfroe, we continually strive to develop new products that help solve the challenges of today's industries' needs. Whether it is our new L series clamps or our time proven line of vertical and horizontal clamps, we are dedicated to...

- Offering the best engineered clamp in the industry;
- Ensuring the customer comes first, with the best possible service and support;
- Standing behind our products, always doing what is right for the customer;
- When making a promise, keeping it, with no strings attached;
- Giving our word and living up to it, for the customer, distributor, sales rep and supplier.

WESTECH RIGGING SUPPLY

Call Toll Free: 800-442-7475

Call Us or Visit Our Stores:
Monday - Friday, 8:00am - 5:30pm Pacific



Distributed By

Visit Us Online at: www.WestechRigging.com

4140 West 11th Avenue
Eugene, Oregon 97402

2439 McGilchrist St SE
Salem, Oregon 97302



**J.C. RENFROE
& SONS.**

THE GLOVES COME OFF WHEN TAKING ON BIG JOBS WITH RENFROE'S "LIGHT WEIGHT WINNER"



FROM HORIZONTAL TO VERTICAL TO HORIZONTAL THROUGH 180(DEGREES)

Renfroe has pulled no punches in creating smaller, durable vertical lifting clamps, the LA and LPA models, called the "Light Weight Winner." They are capable of turning a single plate from horizontal to vertical to horizontal through 180 (degrees). They are knockout winners with...

- Less weight and smaller size for more maneuverability
- Versatile and easy to handle
- Our design makes it easier to repair
- Meets ASME BTH-1 design and service class safety standards
- One half and one ton capacities are available through Renfroe's Instock program



FOR MORE INFORMATION ABOUT
THE "LIGHT WEIGHT WINNERS,"
CALL 1-800-442-7454.

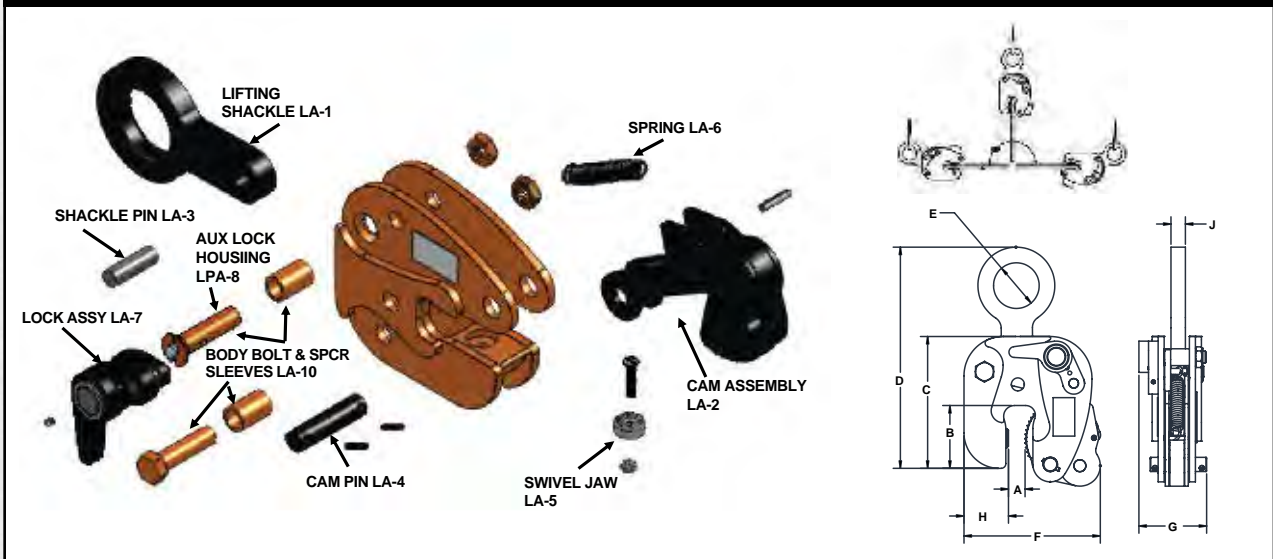


Model LA

Model LA is an ergonomic vertical lifting clamp capable of turning a single plate or member from horizontal to vertical to horizontal through a 180 degree arc. It incorporates a push button auxiliary lock.

The “Lock Open – Lock Closed” feature facilitates attaching and removing the clamp from the plate.

MODEL LA EXPLODED VIEW



SPECIFICATIONS (in inches)

Rated Capacity Tons	Plate Thickness A	B	C	MAX. D	E	MAX. F	G	H	J	Weight (in pounds)
1/2	0-5/8	2	4 7/8	8	1 1/8	4 1/4	2 7/16	1 3/8	3/8	4 1/8
1	0-3/4	2	4 7/8	8	1 1/8	4 3/8	2 7/16	1 3/8	1/2	5 1/8
2	0-1	3 5/16	6 7/8	12 1/2	2 3/8	7 1/16	3 5/8	2 3/8	3/4	16 7/8
3	0-1	3 7/16	10	17	3 3/8	8 1/2	3 13/16	2 3/4	3/4	32

Consult factory for possible larger capacities. SPECIFICATIONS ARE SUBJECT TO CHANGE WITHOUT NOTICE

SPECIFICATIONS (millimeters)

Rated Capacity Tons	Plate Thickness A	B	C	MAX. D	E	MAX. F	G	H	J	Weight (Kilograms)
500 Kg	0-16	50.8	123.8	203.1	28.6	108.0	61.9	34.9	9.5	1.87
1.00	0-19	50.8	123.8	203.1	28.6	111.1	61.9	34.9	12.7	5.1
2.00	0-25	84.2	174.6	317.5	60.3	179.4	92.0	60.3	19.0	7.3
3.00	0-25	84.2	254.0	431.8	92.0	215.9	96.8	69.8	19.0	14.51

Consult factory for possible larger capacities. SPECIFICATIONS ARE SUBJECT TO CHANGE WITHOUT NOTICE



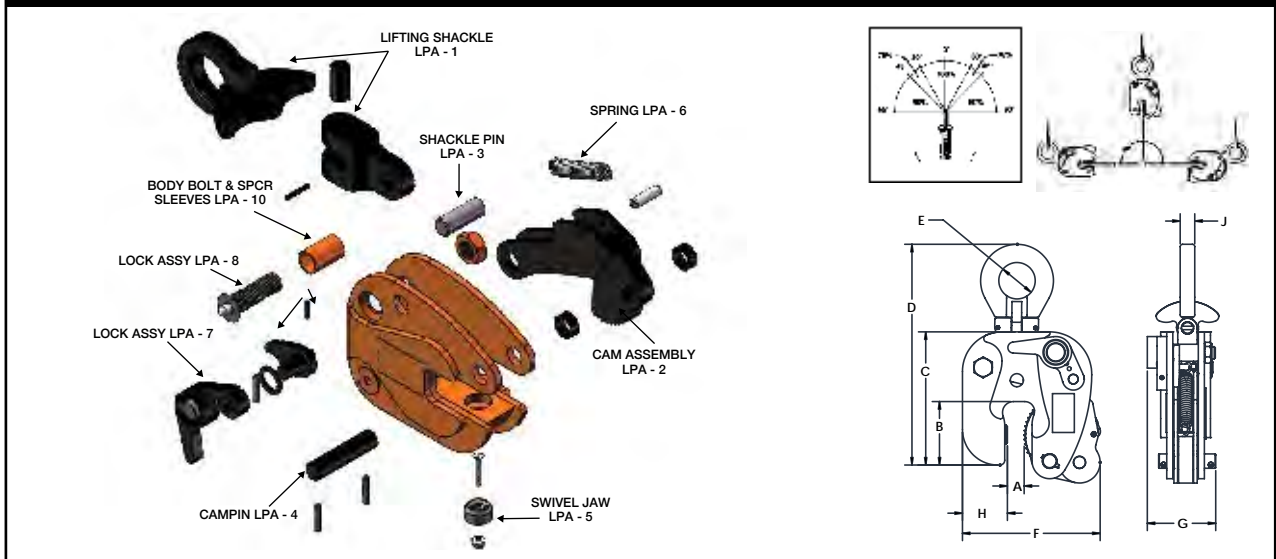


Model LPA

Model LPA is an ergonomic vertical lifting clamp capable of turning a single plate or member from horizontal to vertical to horizontal through a 180 degree arc. It incorporates an auxiliary push button lock. Permits side loading of lifting shackle to 90 degrees by de-rating of clamp's capacity. Refer to FIGURE 1 for de-rated capacities. The "Lock Open – Lock Closed" feature facilitates attaching and removing the clamp from the plate.

The **Model LPA** incorporates a pivoting shackle that permits side loading of the lifting shackle at 100 percent of rated capacity from vertical to 30 degrees, 75 percent of rated capacity between 30 and 45 degrees, and 50 percent of rated capacity between 45 and 90 degrees.

MODEL LPA EXPLODED VIEW



SPECIFICATIONS (in inches)

Rated Capacity Tons	Plate Thickness A	B	C	MAX. D	E	MAX. F	G	H	J	Weight (in pounds)
1/2	0-5/8	2	5 1/16	8 11/16	1 1/8	4 1/4	2 7/16	1 3/8	3/8	4 1/8
1	0-3/4	2	5 1/8	8 11/16	1 1/8	4 3/8	2 7/16	1 3/8	1/2	5 1/8
2	0-1	3 5/16	6 7/8	12 1/2	1 7/8	7 1/16	3 5/8	2 3/8	3/4	16 7/8
3	0-1	3 7/16	10	17	3 5/8	8 1/2	3 13/16	2 3/4	3/4	32

Consult factory for possible larger capacities. SPECIFICATIONS ARE SUBJECT TO CHANGE WITHOUT NOTICE

SPECIFICATIONS (millimeters)

Rated Capacity Tons	Plate Thickness A	B	C	MAX. D	E	MAX. F	G	H	J	Weight (Kilograms)
500 Kg	0-16	50.8	123.8	203.1	28.6	108.0	61.9	34.9	9.5	1.87
1.00	0-19	50.8	123.8	203.1	28.6	111.1	61.9	34.9	12.7	5.1
2.00	0-25	84.2	174.6	317.5	60.3	179.4	92.0	60.3	19.0	7.3
3.00	0-25	84.2	254.0	431.8	92.0	215.9	96.8	69.8	19.0	14.51

Consult factory for possible larger capacities. SPECIFICATIONS ARE SUBJECT TO CHANGE WITHOUT NOTICE

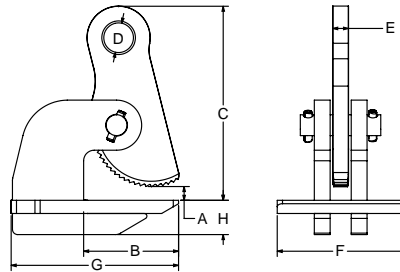
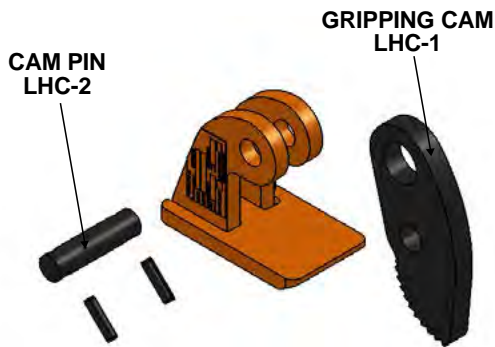




Model LHC

The LHC Model is a horizontal lifting clamp intended to be used in pairs, sets of pairs or in a tripod arrangement for transporting steel plates horizontally. The clamp is designed to lift individual sheets horizontally. Cam operations ensure a tight grip on the load. Serrated gripping cam bites into load for positive grip. Clamps rest in position on edge of plate until tension is applied to the load sling. Clamps must be used in single pairs (2), double pairs (4), or tripod (3) configuration with a lifting sling.

MODEL LHC EXPLODED VIEW



SPECIFICATIONS (in inches)

Rated Capacity Ton	Jaw Opening A	B	C	D	E	F	G	H	Weight Each (in pounds)
1/4	0-1	2 3/8	5	1	1/2	2 1/4	4	3/8	3
1/2	0-2	4 3/8	9 1/4	1 3/8	1/2	4 7/8	7 3/4	5/8	14
3/4	0-2	4 3/8	9 1/4	1 13/32	3/4	5 3/8	7 3/4	3/4	19
1 1/2	0-2	4 9/16	9 1/4	1 13/32	3/4	6 1/8	7 15/16	1	26
3	0-2	4 1/2	9 1/4	1 13/32	3/4	6 1/8	7 15/16	1 5/8	24
4	0-3	7	12 5/16	1 13/32	1	6 1/2	10 3/8	2 3/16	48

Consult factory for possible larger capacities. SPECIFICATIONS ARE SUBJECT TO CHANGE WITHOUT NOTICE

SPECIFICATIONS (millimeters)

Rated Capacity Ton	Jaw Opening A	B	C	D	E	F	G	H	Weight Each (Kilograms)
250 Kg	0-25.4	60.30	127.00	25.40	12.70	57.15	101.60	9.65	1.1
500 Kg	0-50.38	111.30	235.00	35.00	12.70	123.80	196.80	15.88	5
3/4	0-50.38	111.30	235.00	35.80	19.00	136.60	196.80	19.00	7.2
1 1/2	0-50.38	115.80	235.00	35.80	19.00	155.70	201.70	25.40	9.8
3	0-50.38	114.30	312.70	35.80	19.00	155.70	201.70	41.40	9.1
4	0-76.2	177.80	304.80	35.80	25.40	165.10	263.60	55.62	17.7

Consult factory for possible larger capacities. SPECIFICATIONS ARE SUBJECT TO CHANGE WITHOUT NOTICE

