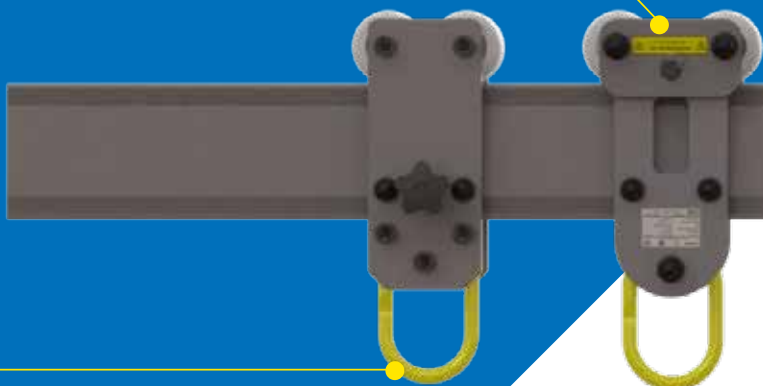


▶ PORTAGANTRY® Trolley Options

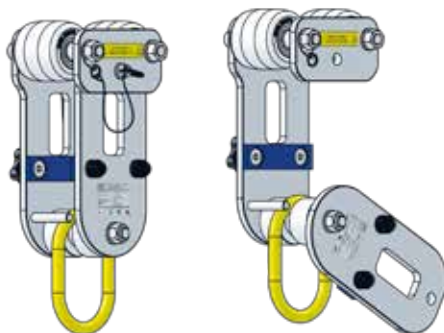
▶ Gated Trolley [Patent Pending]

Our Gated Trolley is expertly designed to incorporate a rotating plate and quick release pin for easy and rapid attachment to the beam. This unique and innovative product enables multiple trolleys to be attached to beam after the Gantry has been fully assembled and can also be locked in position on the beam.



▶ Master-Link Trolley

The Master-Link trolley is fed on to the end of the beam during the assembly of the Gantry. The Master-Link enables a wide range of hoists to be easily attached for lifting operations. The trolley can also be locked in position on the beam.



▶ Gear Driven Trolley

The Gear Driven Trolley is fed on to the end of the beam during the assembly of the Gantry. It is designed to enable a load up to 4400lb to be moved safely along the beam in a controlled manner once lifted. Different chain lengths are available.

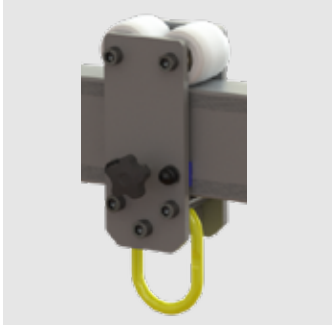


▶ Closed Coupled Trolley

Our Closed Coupled Trolley is designed for use where there is a height restriction that requires an incremental increase in the height of lift. The Closed Coupled Trolley is fed on to the beam during the assembly of the Gantry. This trolley can accommodate a wide range of hoists due to its large oval opening and can be locked into position on the beam.

* The Gated Trolley is tested to and meets the requirements of ANSI Z359.18 2017 for fall protection applications. Each trolley is rated 5000lb for this purpose.

> Master-Link Trolley



Product Code	Description
US-PGTZS06600	Master Link Trolley rated up to 6600lb to Fit A or B Size Beam
US-PGTZL11000	Master Link Trolley rated up to 11000lb to Fit D Size Beam

> Gated Trolley



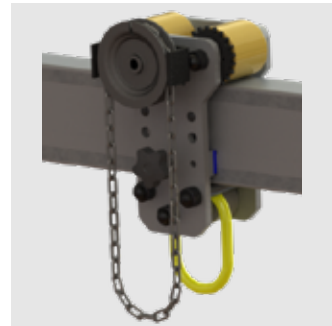
Product Code	Description
US-PGTGS06600	Gated Master link Trolley rated up to 6600lb to Fit A or B Size Beam
US-PGTGL11000	Gated Master link Trolley rated up to 11000lb to Fit D Size Beam

> Closed Coupled Trolley



Product Code	Description
US-PGTXL06600	Close Coupled Trolley rated up to 6600lb to Fit D Size Beam
US-PGTXL11000	Close Coupled Trolley rated up to 11000lb to Fit D Size Beam
US-PGTXS06600	Close Coupled Trolley rated up to 6600lb to Fit A or B Size Beam

> Gear Driven Trolley



Product Code	Description
US-PGTYL04400	Gear Driven Trolley rated up to 4400lb to Fit D Size Beam
US-PGTYS04400	Gear Driven Trolley rated up to 4400lb to Fit A or B Size Beam