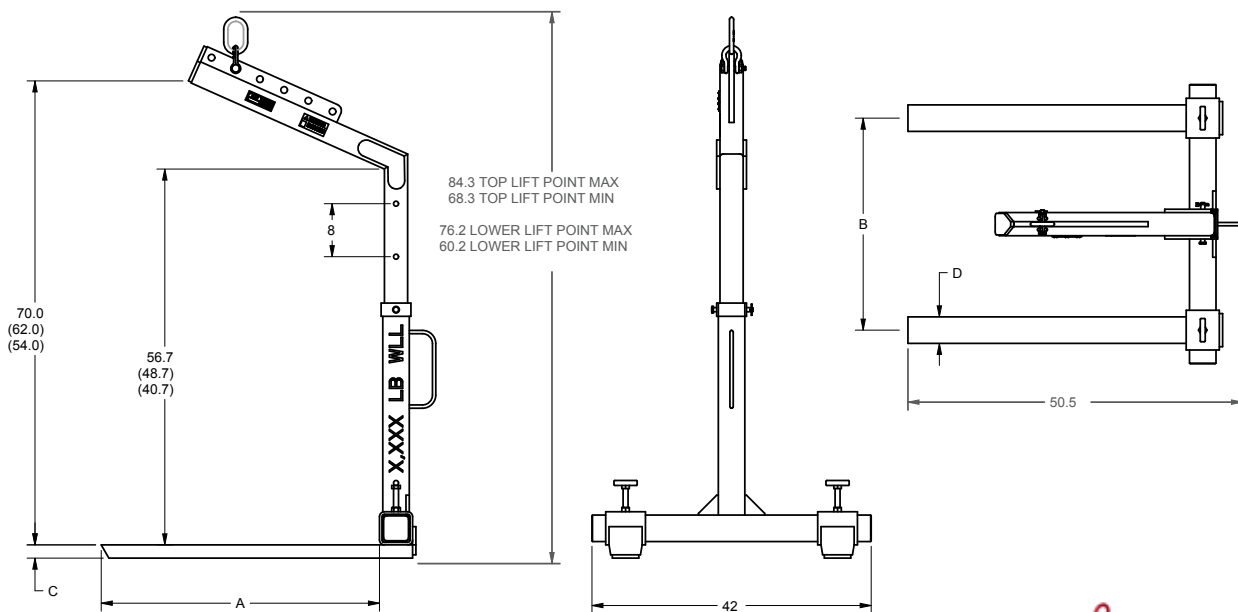


- Manufactured to exceed all ASME B30.20 and OSHA regulations.
- Painted safety yellow for increased visibility.
- **ALL** material handling equipment proof loaded and shipped with certification paperwork.
- Durable construction ideally suited to jobsite or warehouse use.
- Made in U.S.A.
- Custom designs available - call for engineering.

 Prop 65 – See Page 112



| Working Load Limit in Pounds* | Part Number | A  | B        | C | D | Weight in Pounds |
|-------------------------------|-------------|----|----------|---|---|------------------|
| 4,000                         | 12412       | 42 | 17 to 36 | 2 | 4 | 400              |

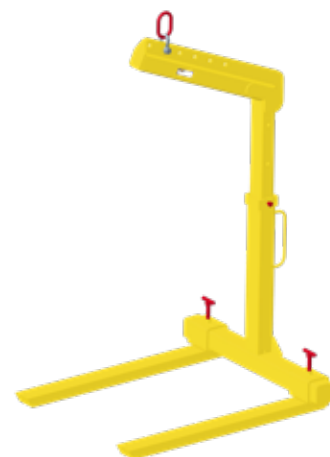
\* Call for specifications on larger sizes and capacities

**\*\* FOR A LEVEL LIFT, THE CENTER LIFTING BAIL MUST BE OVER THE LOADS CENTER OF GRAVITY**

Converts crane or hoist into aerial forklift.

Fork Length : 42"

Adjustable Fork Spacing : 17 - 36"

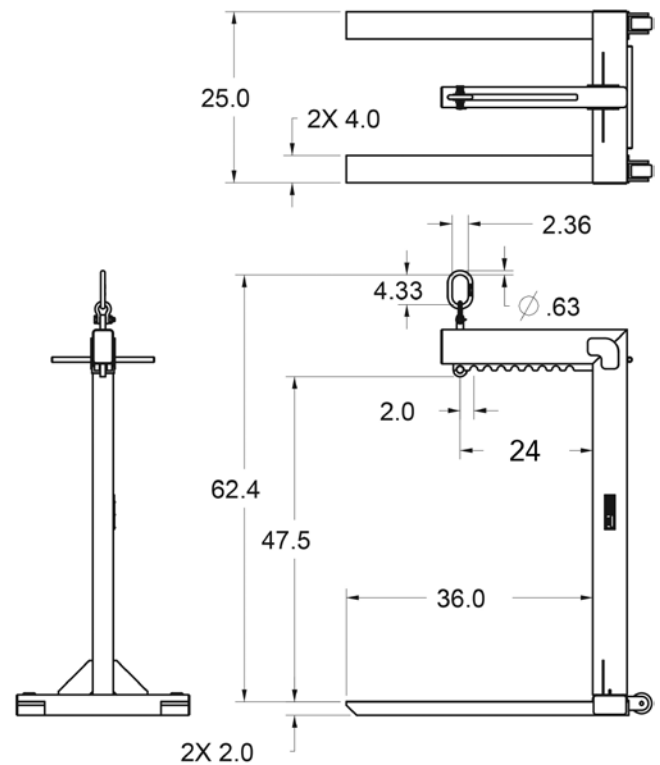


## PALLET LIFTERS

### Adjustable Wheeled Pallet Lifters

- Manufactured to exceed all ASME B30.20 and OSHA regulations.
- Painted safety yellow for increased visibility.
- **ALL** material handling equipment proof loaded and shipped with certification paperwork.
- Durable construction ideally suited to jobsite or warehouse use.
- Made in U.S.A.
- Custom designs available - call for engineering.

 Prop 65 – See Page 112



| Working Load Limit in Pounds* | Part Number | Weight in Pounds |
|-------------------------------|-------------|------------------|
| 4,000                         | 14998       | 330              |


\* Call for specifications on larger sizes and capacities

- Converts crane or hoist into aerial forklift.
- Multiple Lift Bale adjustments.

**\*\* FOR A LEVEL LIFT, THE CENTER LIFTING BAIL MUST BE OVER THE LOADS CENTER OF GRAVITY**

- Manufactured to exceed all ASME B30.20 and OSHA regulations.
- Painted safety yellow for increased visibility.
- **ALL** material handling equipment proof loaded and shipped with certification paperwork.

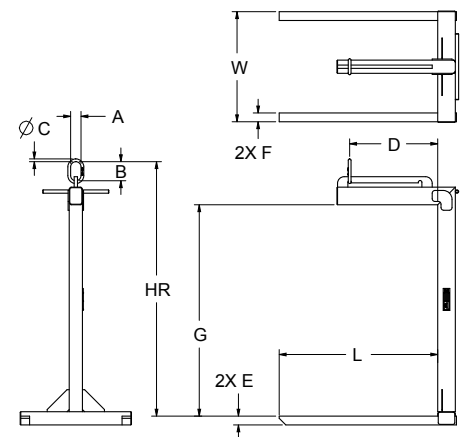
- Durable construction ideally suited to jobsite or warehouse use.
- Made in U.S.A.
- Custom designs available - call for engineering.

 Prop 65 – See Page 112

| Working Load Limit in Pounds* | Part Number | Weight in Pounds | HR   | A    | B    | C    | D  | E   | F   | G  | L  | W  |
|-------------------------------|-------------|------------------|------|------|------|------|----|-----|-----|----|----|----|
| 2,000                         | 14511       | 190              | 57.8 | 2.36 | 4.33 | 0.63 | 24 | 2   | 2   | 48 | 36 | 25 |
| 4,000                         | 14512       | 335              | 58.8 | 2.36 | 4.33 | 0.63 | 24 | 2   | 4   | 48 | 36 | 25 |
| 6,000                         | 14513       | 460              | 62.8 | 3.94 | 7.09 | 1.03 | 24 | 2.5 | 4.5 | 48 | 36 | 27 |
| 8,000                         | 16664       | 660              | 65.0 | 3.94 | 7.09 | 1.03 | 24 | 3   | 5   | 48 | 36 | 27 |

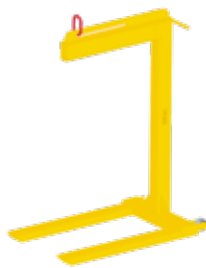
\* Call for specifications on larger sizes and capacities

**\*\* FOR A LEVEL LIFT, THE CENTER LIFTING BAIL MUST BE OVER THE LOADS CENTER OF GRAVITY**



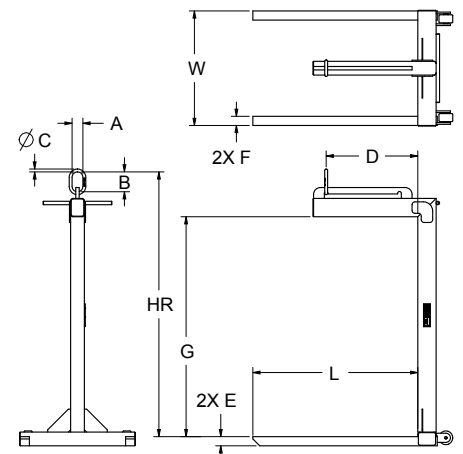
Converts crane or hoist into aerial forklift.

Converts crane or hoist into aerial forklift.



| Working Load Limit in Pounds* | Part Number | Weight in Pounds | HR   | A    | B    | C    | D  | E | F | G  | L  | W  |
|-------------------------------|-------------|------------------|------|------|------|------|----|---|---|----|----|----|
| 2,000                         | 14538       | 190              | 57.8 | 2.36 | 4.33 | 0.63 | 24 | 2 | 2 | 48 | 36 | 25 |
| 4,000                         | 14537       | 335              | 58.8 | 2.36 | 4.33 | 0.63 | 24 | 2 | 4 | 48 | 36 | 25 |

\* Call for specifications on larger sizes and capacities



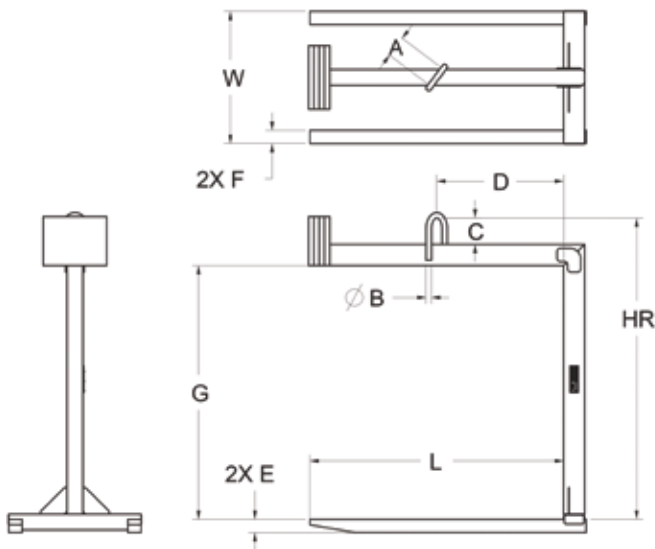
## PALLET LIFTERS

- Manufactured to exceed all ASME B30.20 and OSHA regulations.
- Painted safety yellow for increased visibility.
- **ALL** material handling equipment proof loaded and shipped with certification paperwork.
- Durable construction ideally suited to jobsite or warehouse use.
- Made in U.S.A.
- Custom designs available - call for engineering.

 Prop 65 – See Page 112

| Working Load Limit in Pounds* | Part Number | Weight in Pounds | HR | A | B | C   | D  | E   | F   | G  | L  | W  |
|-------------------------------|-------------|------------------|----|---|---|-----|----|-----|-----|----|----|----|
| 2,000                         | 14631       | 190              | 57 | 4 | 5 | 1   | 24 | 2.5 | 2.5 | 48 | 48 | 25 |
| 4,000                         | 14630       | 760              | 59 | 4 | 5 | 1   | 24 | 2.5 | 4   | 48 | 48 | 25 |
| 6,000                         | 14629       | 965              | 62 | 4 | 7 | 1.5 | 24 | 3   | 5   | 48 | 48 | 27 |

\* Call for specifications on larger sizes and capacities



**\*\* FOR A LEVEL LIFT, THE CENTER LIFTING BAIL MUST BE OVER THE LOADS CENTER OF GRAVITY**

- Converts crane or hoist into aerial forklift.
- Counter balance allows lifter to hang level when empty.



\* Call for specifications on larger sizes and capacities