

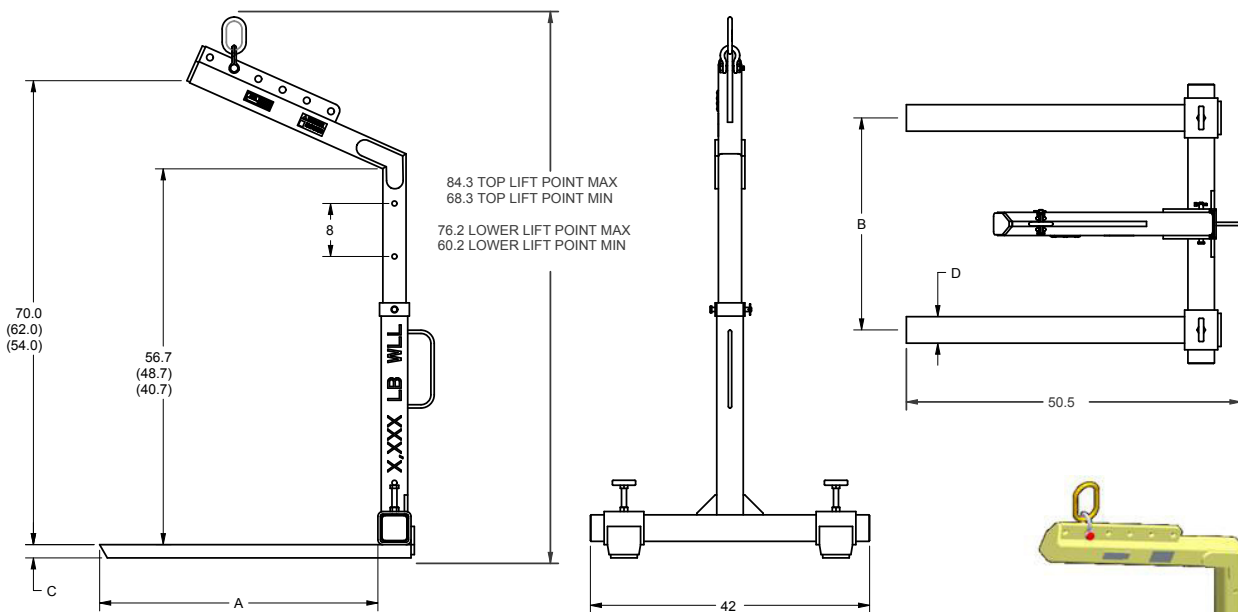
PALLET LIFTER

with Adjustable Lifting Base
and Adjustable Lift Bale

PALLET LIFTER WITH ADJUSTABLE LIFTING BASE AND ADJUSTABLE LIFT BALE

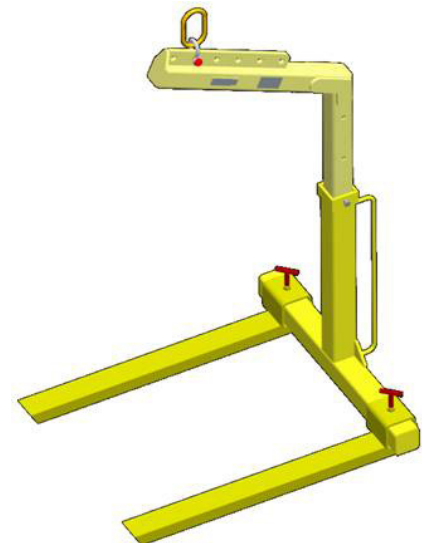
- Manufactured to exceed all ASME B30.20 and OSHA regulations.
- Painted safety yellow for increased visibility.
- **ALL** material handling equipment proof loaded and shipped with certification paperwork.
- Durable construction ideally suited to jobsite or warehouse use.
- Made in U.S.A.
- Custom designs available - call for engineering.

Prop 65 – See Page 98



Working Load Limit in Pounds*	Part Number	A	B	C	D	Weight in Pounds
4,000	12412	42	17 to 36	2	4	400

* Call for specifications on larger sizes and capacities



Converts crane or hoist into aerial forklift.

Fork Length : 42"

Adjustable Fork Spacing : 17 - 36"

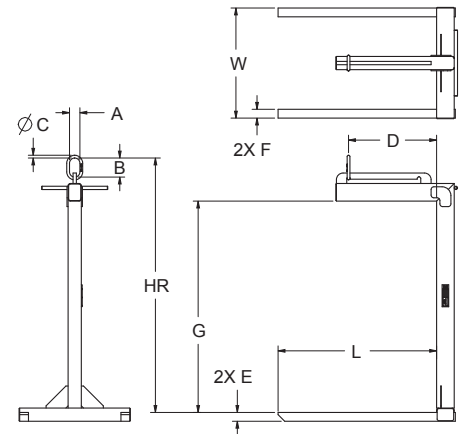
PALLET LIFTERS

- Manufactured to exceed all ASME B30.20 and OSHA regulations.
- Painted safety yellow for increased visibility.
- **ALL** material handling equipment proof loaded and shipped with certification paperwork.
- Durable construction ideally suited to jobsite or warehouse use.
- Made in U.S.A.
- Custom designs available - call for engineering.

Prop 65 – See Page 98

Working Load Limit in Pounds*	Part Number	Weight in Pounds	HR	A	B	C	D	E	F	G	L	W
2,000	14511	190	57.8	2.36	4.33	0.63	20	2	2	48	36	25
4,000	14512	335	58.8	2.36	4.33	0.63	20	2	4	48	36	25
6,000	14513	460	62.8	3.94	7.09	1.03	18	2.5	4.5	48	36	27
8,000	16664	660	46.2	3.94	7.09	1.03	17.5	3	5	48	36	27

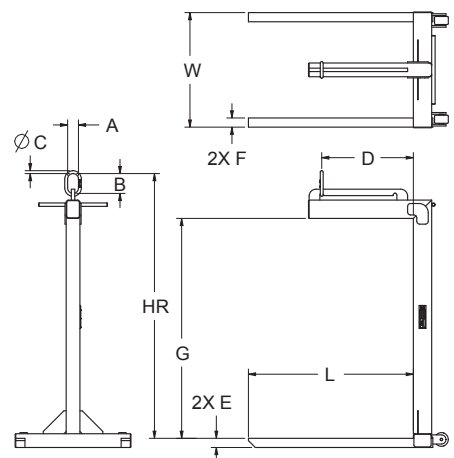
* Call for specifications on larger sizes and capacities



Converts crane or hoist into aerial forklift.



Converts crane or hoist into aerial forklift.



Working Load Limit in Pounds*	Part Number	Weight in Pounds	HR	A	B	C	D	E	F	G	L	W
2,000	14538	190	57.8	2.36	4.33	0.63	20	2	2	48	36	25
4,000	14537	335	58.8	2.36	4.33	0.63	20	2	4	48	36	25

* Call for specifications on larger sizes and capacities

PALLET LIFTERS



PALLET LIFTERS

- Manufactured to exceed all ASME B30.20 and OSHA regulations.
- Painted safety yellow for increased visibility.
- **ALL** material handling equipment proof loaded and shipped with certification paperwork.
- Durable construction ideally suited to jobsite or warehouse use.
- Made in U.S.A.
- Custom designs available - call for engineering.

Prop 65 – See Page 98

Working Load Limit in Pounds*	Part Number	Weight in Pounds	HR	A	B	C	D	E	F	G	L	W
2,000	14631	190	57	4	5	1	24	2.5	2.5	48	48	25
4,000	14630	760	59	4	5	1	24	2.5	4	48	48	25
6,000	14629	965	62	4	7	1.5	24	3	5	48	48	27

* Call for specifications on larger sizes and capacities

- Converts crane or hoist into aerial forklift.
- Counter balance allows lifter to hang level when empty.

