

STANDARD WEB SLING TYPES

HARDWARE SLINGS

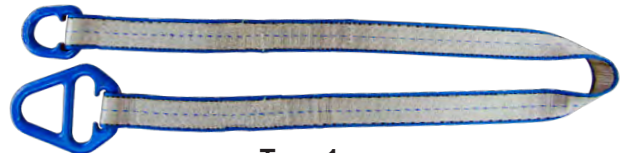
Unilink™ and *Web-Trap™* hardware can help to extend sling life by protecting the webbing from abrasion on rough crane hooks. Hardware can often be reused, lowering sling replacement costs.

Type U (UU) - Has the preferred and economical *Unilink* fitting with *Web-Trap* on each end for use in a vertical, choker or basket hitch. *Unilinks* allow choking from either end to save time and vary wear points.



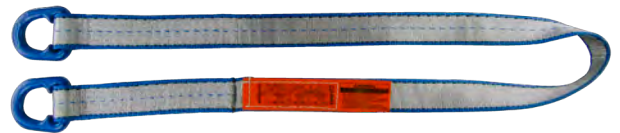
Type U

Type 1 (TC) - Has a *Web-Trap* triangle on one end and choker on the other end. Typical use is in a choker hitch. Can also be used in vertical and basket hitches.



Type 1

Type 2 (TT) - Has a *Web-Trap* triangle on each end. Normally used in a basket hitch, but can also be used in a vertical hitch. Cannot be used as a choker.



Type 2

EYE / EYE

Type 3 (EE) - Flat Eye slings are very popular and can be used in all three types of hitches. They are easier to remove from beneath the load than sling Types 1, 2 and 4. Type 3 will be supplied as the standard EE sling, unless Type 4 is requested.



Type 3

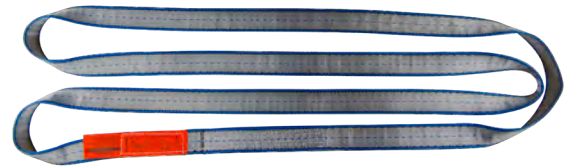
Type 4 (EE) - Twisted Eye slings are similar to Type 3 except the eyes are turned 90°. The eyes of a Type 4 nest easily on the crane hook. Reverse the eyes to allow more even wear in eyes.



Type 4

ENDLESS

Type 5 (EN) - Endless slings are versatile and the most economically priced. They can be used in all three types of hitches. The sling can be rotated to minimize wear. The sling legs can be spread for improved load balance.



Type 5

REVERSE EYE

Type 6 (RE) - An endless sling with butted edges sewn together to double the sling width. They have reinforced eyes and wear pads on both sides of body and eyes for premium wear resistance.



Type 6

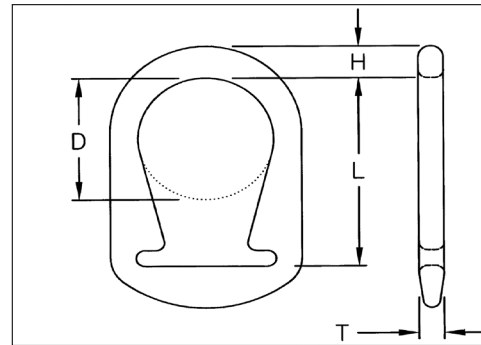
UNILINK™ SLING HARDWARE

Unilink Web Sling Hardware

Unilinks are a forged, high carbon steel fitting that function as both a triangle and choker.

Features and Benefits

- Forged steel for strength and reliability.
- Smooth rounded profile helps protect sling, worker, and load.
- Can be re-webbed to reduce cost.
- Powder-coated finish for longer life.
- Unilinks cost less than triangle/choker combinations.
- Large crane hook opening speeds rigging.
- *Web-Trap™* feature keeps web aligned on hardware.
- Functions both as a triangle and a choker, allowing you to choke from either end.
- Unilink has the same rated capacities as TT or TC slings.



Unilink Hardware Specifications						
Web Width (in.)	Dimensions (in.)				Weight (in.)	WLL (lbs.)
	L	D	H	T		
2	3.69	2.0	0.69	0.56	1.1	4,000
3	5.06	3.0	0.88	0.63	2.4	6,000
4	6.19	4.0	1.00	0.75	4.0	8,000

Avoid contact of hardware with load edges.

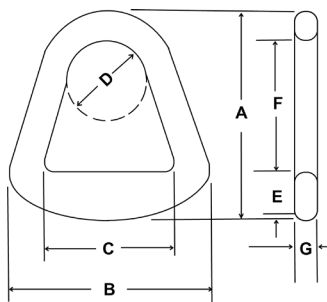
Forged Aluminum Triangles and Chokers

Aluminum is severely degraded by alkali, caustic environments, acids and salt water.

Aluminum triangles and chokers are available but may only be used with single-ply web slings within the rated capabilities shown in the table. They should not be used with *Dura-Web™* 2000 webbing.

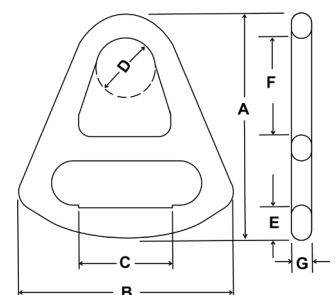
Forged from aircraft aluminum, this tough alloy is stronger than mild steel. Aluminum has the advantages of being lightweight, non-sparking and does not rust.

Note: Aluminum triangles and chokers **DO NOT** offer the advantages of the *Web-Trap* feature. Aluminum fittings are not as durable and cost more than steel.



Forged Aluminum Triangles									
Part Number	Dimensions (in.)							Approx. Wt. (lbs.)	WLL
	A	B	C	D	E	F	G		
2ALT1	4.0	3.625	2.25	1.75	0.9375	2.375	0.5625	0.31	3360
3ALT1	5.25	5.0	3.25	2.0	1.1875	3.3125	0.625	0.75	5000
4ALT1	6.25	6.625	4.375	2.375	1.4375	4.0	0.6875	1.1	6700
6ALT1	8.3125	8.875	6.375	3.125	1.75	5.50	0.9375	2.7	9700

Forged Aluminum Chokers									
Part Number	Dimensions (in.)							Approx. Wt. (lbs.)	WLL
	A	B	C	D	E	F	G		
2ALC1	6.125	5.25	2.125	1.75	0.9375	2.375	0.5625	0.73	3360
3ALC1	7.5	7.125	3.125	2.0	1.125	3.3125	0.625	1.3	5000
4ALC1	8.75	8.75	4.125	2.375	1.4375	4.0	0.6875	1.9	6700
6ALC1	11.3125	11.75	6.125	3.125	1.75	5.50	0.9375	5.1	9700



General Information
Web Slings
Round Slings
Protection
Sling
Rope
Wire Rope
Chain Slings
Rigging Hardware
Mesh Slings
Load Huggers
Products
Tow Hoists
Hoist Rings
Plate Clamps
Lifting Devices

TUFF-EDGE® & WEBMASTER® 1600 POLYESTER SLINGS

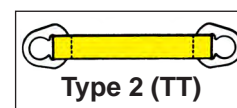
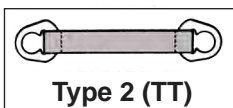
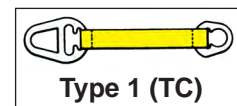
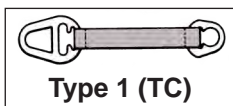
TYPE U - UNILINK™ HARDWARE SLINGS



Ply	Tuff-Edge III Part No.*	Web Width (in.)	Rated Capacity* (lbs.)			Webmaster 1600 Polyester Part No.***	Webmaster 1600 Nylon Part No.***
			Vertical	Choker	V. Basket		
One Ply	UU1802T	2	3,200	2,500	6,400	UU1802D	UU1802N
	UU1803T	3	4,800	3,800	9,600	UU1803D	UU1803N
	UU1804T	4	6,400	5,000	12,800	UU1804D	UU1804N
Two Ply	UU2802T	2	6,400	5,000	12,800	UU2802D	UU2802N
	UU2803T	3	8,800	7,040	17,600	UU2803D	UU2803N
	UU2804T	4	11,500	9,200	23,000	UU2804D	UU2804N

*Replace the UU with TT or TC in part number above if Type 1 or Type 2 is required.

TYPE 1 (TC) & TYPE 2 (TT) WEB-TRAP™ HARDWARE SLINGS



Ply	Tuff-Edge III Part No.		Web Width (in.)	Rated Capacity* (lbs.)			Webmaster 1600 Polyester Part No.***		Webmaster 1600 Nylon Part No.***	
	Type 1	Type 2**		Vertical	Choker	V. Basket	Type 1	Type 2**	Type 1	Type 2**
One Ply	TC1806T	TT1806T	6	9,600	7,700	19,200	TC1806D	TT1806D	TC1806N	TT1806N
	TC1808T	TT1808T	8	12,800	10,200	25,600	TC1808D	TT1808D	TC1808N	TT1808N
	TC1810T	TT1810T	10	16,000	12,800	32,000	TC1810D	TT1810D	TC1810N	TT1810N
	TC1812T	TT1812T	12	19,200	15,400	38,400	TC1812D	TT1812D	TC1812N	TT1812N
	TC1816T	TT1816T	16	25,500	20,400	51,000	TC1816D	TT1816D	TC1816N	TT1816N
Two Ply	TC2806T	TT2806T	6	16,800	13,400	33,600	TC2806D	TT2806D	TC2806N	TT2806N
	TC2808T	TT2808T	8	22,400	17,900	44,800	TC2808D	TT2808D	TC2808N	TT2808N
	TC2810T	TT2810T	10	28,000	22,400	56,000	TC2810D	TT2810D	TC2810N	TT2810N
	TC2812T	TT2812T	12	33,600	26,800	67,200	TC2812D	TT2812D	TC2812N	TT2812N
	TC2816T	TT2816T	16	44,800	35,800	89,600	TC2816D	TT2816D	TC2816N	TT2816N

** Type 2 (TT) cannot be used in a choker hitch.

*** To order aluminum hardware, single ply 2" - 6" only, add A after TC or TT.

Custom configurations available.

*

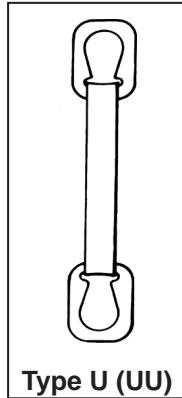


WARNING

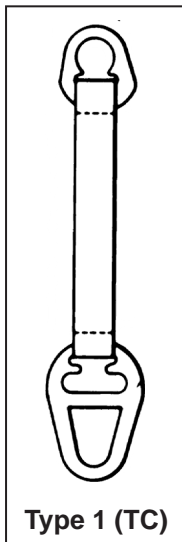
Do not exceed rated capacities. Sling tension increases as the angle from horizontal decreases. Slings should not be used at angles of less than 30°. Refer to the Effect of Angle chart in the General Information section of this catalog. **Always protect synthetic slings from being cut by corners and edges. See the Sling Protection section in this catalog.**

General Information
Web Slings
Round Slings
Sling Protection
Wire Rope
Chain Slings
Rigging Hardware
Mesh Slings
Load Huggers
Tower Products
Lift-All Hoists
Hoist Rings
Plate Clamps
Lifting Devices

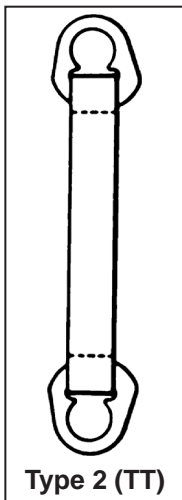
WEB SLING WEIGHTS*



Part Number	Minimum Standard Length		Additional Foot
	ft.	wt.** (lbs.)	wt. (lbs.)
UNILINK™			
UU1802	3	2.70	0.12
UU1803	3	5.60	0.18
UU1804	4	9.20	0.24
UU2802	3	2.90	0.25
UU2803	3	5.80	0.38
UU2804	3	9.20	0.50



TRIANGLE / CHOKER			
TC1802	3	3.50	0.12
TC1803	3	6.30	0.18
TC1804	4	9.00	0.24
TC1806	4	21.00	0.36
TC1808	5	27.00	0.48
TC1810	5	48.00	0.60
TC1812	6	65.00	0.72
TC2802	3	3.60	0.25
TC2803	3	6.50	0.38
TC2804	3	9.10	0.50
TC2806	4	21.00	.76
TC2808	4	39.00	1.00
TC2810	5	63.00	1.30
TC2812	5	86.00	1.50



TRIANGLE / TRIANGLE			
TT1802	3	2.60	0.12
TT1803	3	4.60	0.18
TT1804	3	6.70	0.24
TT1806	4	15.00	0.36
TT1808	5	19.00	0.48
TT1810	5	36.00	0.60
TT1812	5	44.00	0.72
TT2802	3	2.70	0.25
TT2803	3	4.80	0.38
TT2804	3	7.00	0.50
TT2806	3	15.00	0.76
TT2808	4	28.00	1.00
TT2810	4	46.00	1.30
TT2812	5	60.00	1.50

* Weights will vary. Published weights are average weights for *Webmaster*® 1600 slings.

** Approximate weight for the minimum standard length as shown.