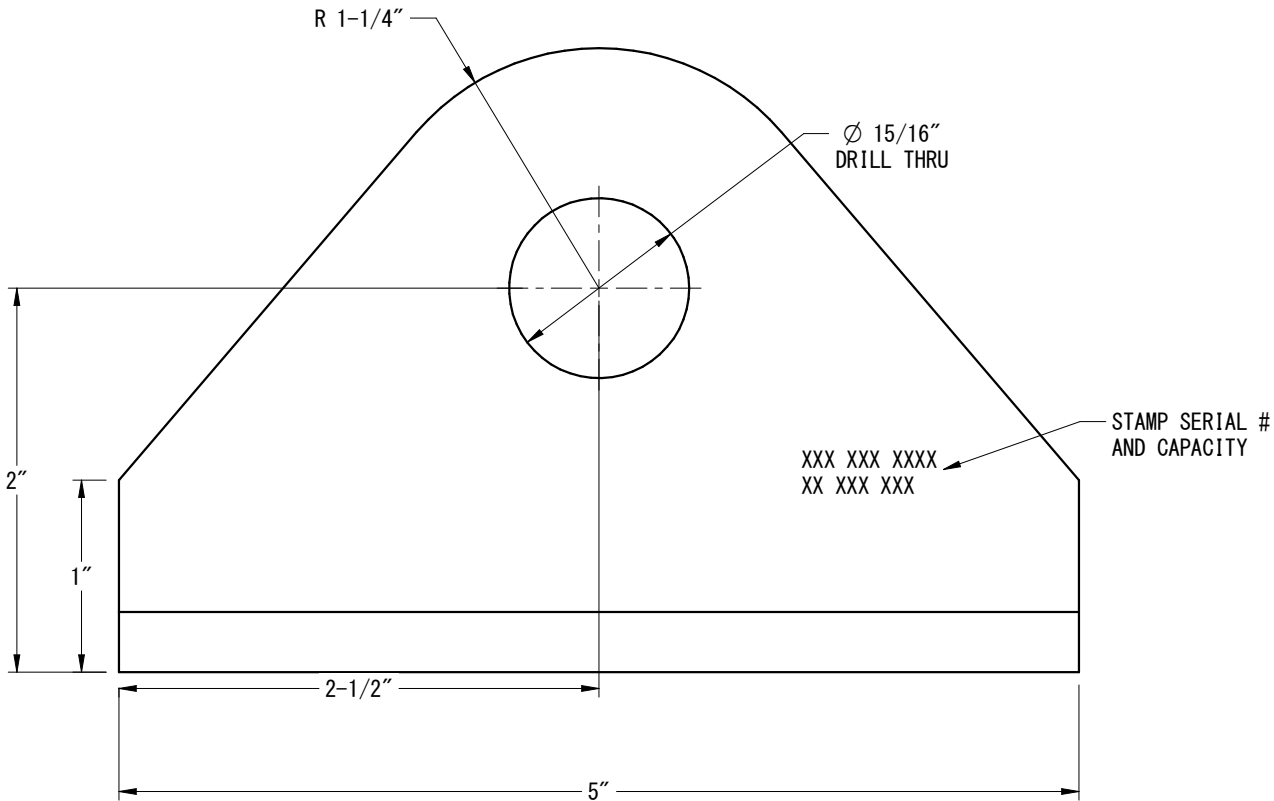
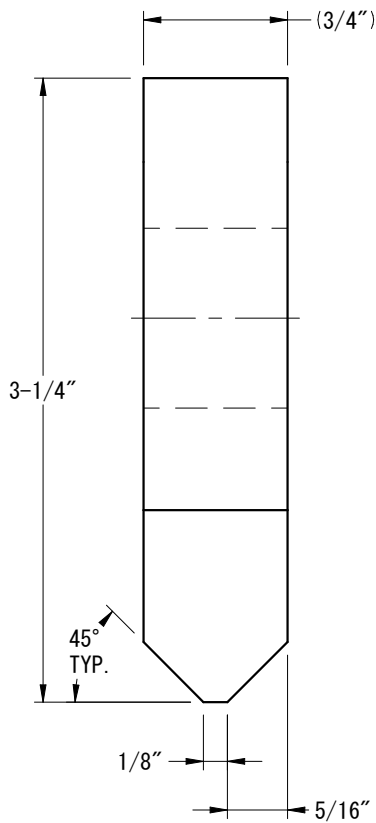
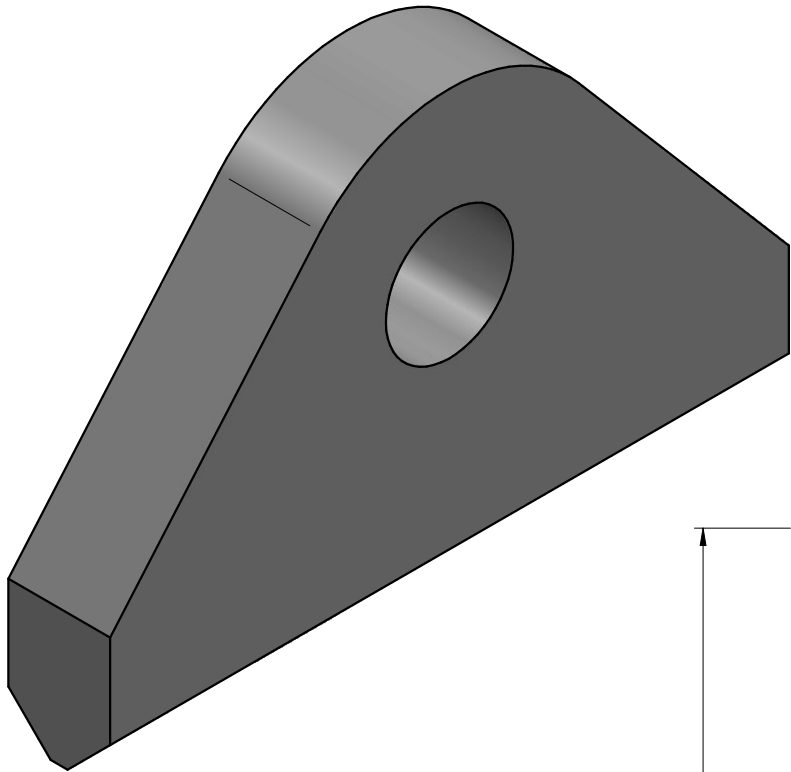


REVISION HISTORY			
REV.	DESCRIPTION	DATE	APPROVED
1	REDRAW & NOTES	9-16-09	AD
1	ISSUED FOR PRODUCTION	10/09/09	SKE
2	GENERAL NOTES UPDATED	04-12-22	RL



DRAWING APPROVAL

BY \_\_\_\_\_

DATE \_\_\_\_\_

\_\_\_ AS DRAWN \_\_\_ AS NOTED

GENERAL NOTES:

- WELDING PER AWS D1.1.
- ENSURE BASE STRUCTURE IS CAPABLE OF HANDLING FORCES APPLIED BY PADEYE.
- ORIENT PADEYE IN DIRECTION OF SLING TO MINIMIZE SIDE LOAD.
- PADEYE TO BE WELDED USING A MIN. 70 KSI YIELD ELECTRODE.
- PADEYE MATERIAL IS GROUP II DESIGNATION AS PER AWS D1. 1.
- FINAL LOAD TEST SHALL BE PERFORMED TO 2.0 X RATED CAPACITY AFTER WELDUP IS COMPLETE.
- 100% MAGNETIC PARTICLE INSPECTION FOR FILLET WELDS AND 100% ULTRASONIC WELD INSPECTION FOR PENETRATION WELDS TO BE COMPLETED AFTER LOAD TEST IN ACCORDANCE WITH ASME SPECIFICATIONS.
- BREAK ALL EDGES AND CORNERS UNLESS OTHERWISE SPECIFIED. CHAMFER EDGES APPROX. 1/8".
- THIS PADEYE MEETS OR EXCEEDS ANSI/ASME B30.20 BELOW THE HOOK LIFTING DEVICES REQUIREMENTS.
- COATING SYSTEM SHALL BE COLD GALVANIZED.
- DESIGN TEMP. -20 DEG F TO 150 DEG F.
- REQUEST ALL MTR'S W/ CHEMISTRY, MECHANICAL & TESTING REPORTS.

TOLERANCE UNLESS NOTED  
ALL FRACTIONAL  $\pm 1/8"$   
.0  $\pm 0.1$   
.00  $\pm 0.02$   
.000  $\pm 0.005$

ANGULAR TOLERANCE  
UNLESS NOTED  
ALL ANGULAR DIM.  $\pm 1^\circ$

UNLESS NOTED  
ALL MACHINED  
SURFACES PER  
ASME/ANSI B46.1  
125  $\sqrt{\mu\text{in}}$

PROJECT: REF # XXXX

BISHOP  
LIFTING

10340 WALLISVILLE RD.  
HOUSTON, TEXAS 77013  
WWW.LIFTING.COM • (713) 674-2266

CHECK OFF

ACTION	APP.	DATE
DESIGN	HP	8-16-05
DRAWN	AQ	4-12-23
ENG.	HP	8-16-05
CHK.	CH	4-12-23

TITLE

BLP STANDARD PADEYE  
3.25 METRIC TONS

THIRD ANGLE  
PROJECTION

DWG NO.

UPEB-00325

REV.  
2

B SIZE

SCALE: NTS

EST. WT. 2.2 lbm

SHEET 1 OF 1

THIS DRAWING CONTAINS CONFIDENTIAL INFORMATION.  
DATA CONTAINED WITHIN IS TO BE USED FOR INTENDED  
PURPOSES ONLY. NO DUPLICATION OR DISCLOSURE ALLOWED  
WITHOUT PRIOR WRITTEN CONSENT FROM BISHOP LIFTING  
PRODUCTS INC. ALL DUPLICATES SHALL BE RETURNED OR  
DESTROYED IMMEDIATELY UPON REQUEST!