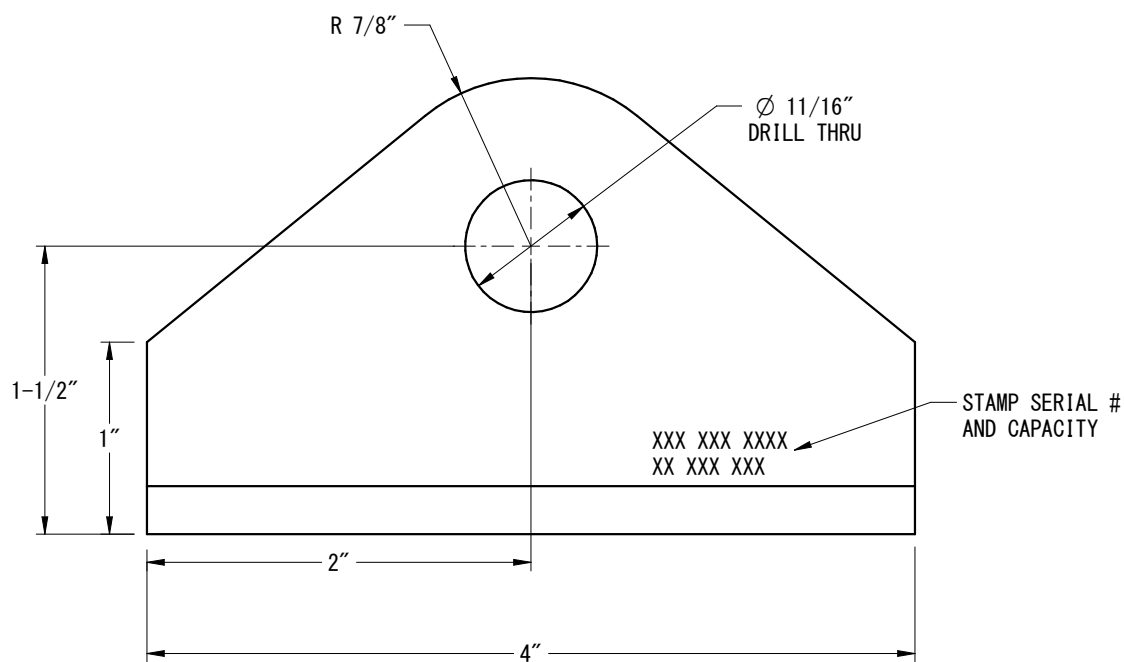
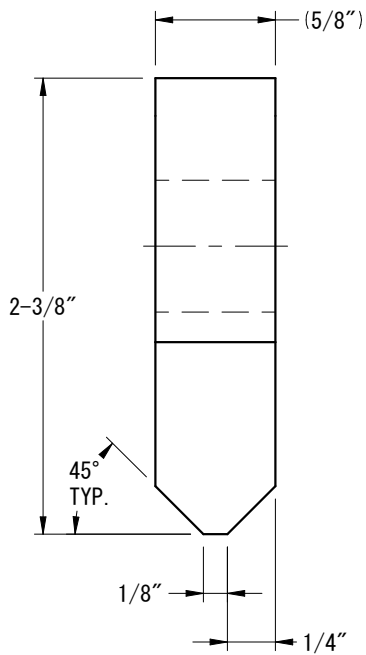
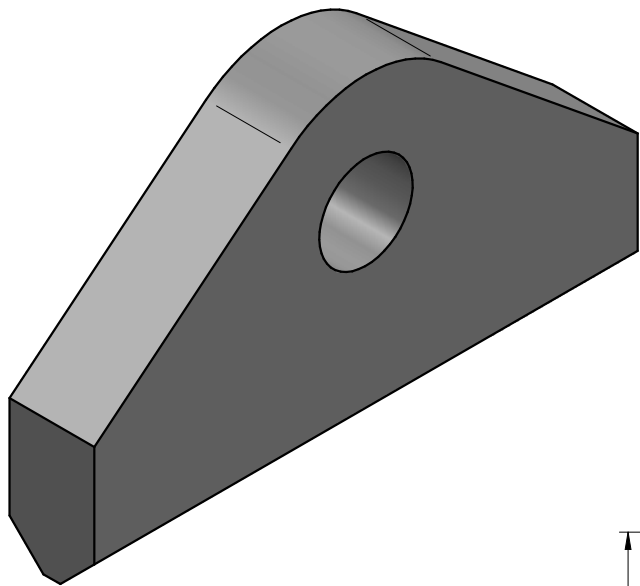


REVISION HISTORY			
REV.	DESCRIPTION	DATE	APPROVED
1	REDRAW & NOTES	9-16-09	AD
1	ISSUED FOR CONSTRUCTION	10-16-09	AD
2	GENERAL NOTES UPDATED	04-12-22	RL



GENERAL NOTES:

1. WELDING PER AWS D1.1.
2. ENSURE BASE STRUCTURE IS CAPABLE OF HANDLING FORCES APPLIED BY PADEYE.
3. ORIENT PADEYE IN DIRECTION OF SLING TO MINIMIZE SIDE LOAD.
4. PADEYE TO BE WELDED USING A MIN. 70 KSI YIELD ELECTRODE.
5. PADEYE MATERIAL IS GROUP II DESIGNATION AS PER AWS D1. 1.
6. FINAL LOAD TEST SHALL BE PERFORMED TO 2.0 X RATED CAPACITY AFTER WELDUP IS COMPLETE.
7. 100% MAGNETIC PARTICLE INSPECTION FOR FILLET WELDS AND 100% ULTRASONIC WELD INSPECTION FOR PENETRATION WELDS TO BE COMPLETED AFTER LOAD TEST IN ACCORDANCE WITH ASME SPECIFICATIONS.
8. BREAK ALL EDGES AND CORNERS UNLESS OTHERWISE SPECIFIED. CHAMFER EDGES APPROX. 1/8".
9. THIS PADEYE MEETS OR EXCEEDS ANSI/ASME B30.20 BELOW THE HOOK LIFTING DEVICES REQUIREMENTS.
10. COATING SYSTEM SHALL BE COLD GALVANIZED.
11. DESIGN TEMP. -20 DEG F TO 150 DEG F.
12. REQUEST ALL MTR'S W/ CHEMISTRY, MECHANICAL & TESTING REPORTS.

DRAWING APPROVAL

BY _____

DATE _____

___AS DRAWN___AS NOTED

TOLERANCE UNLESS NOTED
ALL FRACTIONAL ± 1/8"
.0 ± 0.1
.00 ± 0.02
.000 ± 0.005

ANGULAR TOLERANCE
UNLESS NOTED
ALL ANGULAR DIM. ± 1°

UNLESS NOTED
ALL MACHINED
SURFACES PER
ASME/ANSI B46.1
125√μin

PROJECT: REF # XXXX

BISHOP
LIFTING

CHECK OFF

ACTION	APP.	DATE
DESIGN	HP	8-16-05
DRAWN	AQ	4-11-23
ENG.	HP	8-16-05
CHK.	CH	4-11-23

10340 WALLISVILLE RD.
HOUSTON, TEXAS 77013
WWW.LIFTING.COM • (713) 674-2266

TITLE

BLP STANDARD PADEYE
2 METRIC TONS

THIRD ANGLE
PROJECTION

DWG NO.
UPEB-00200

EST. WT. 1.1 lbm

REV.
0

SHEET 1 OF 1

THIS DRAWING CONTAINS CONFIDENTIAL INFORMATION.
DATA CONTAINED WITHIN IS TO BE USED FOR INTENDED
PURPOSES ONLY. NO DUPLICATION OR DISCLOSURE ALLOWED
WITHOUT PRIOR WRITTEN CONSENT FROM BISHOP LIFTING
PRODUCTS INC. ALL DUPLICATES SHALL BE RETURNED OR
DESTROYED IMMEDIATELY UPON REQUEST!