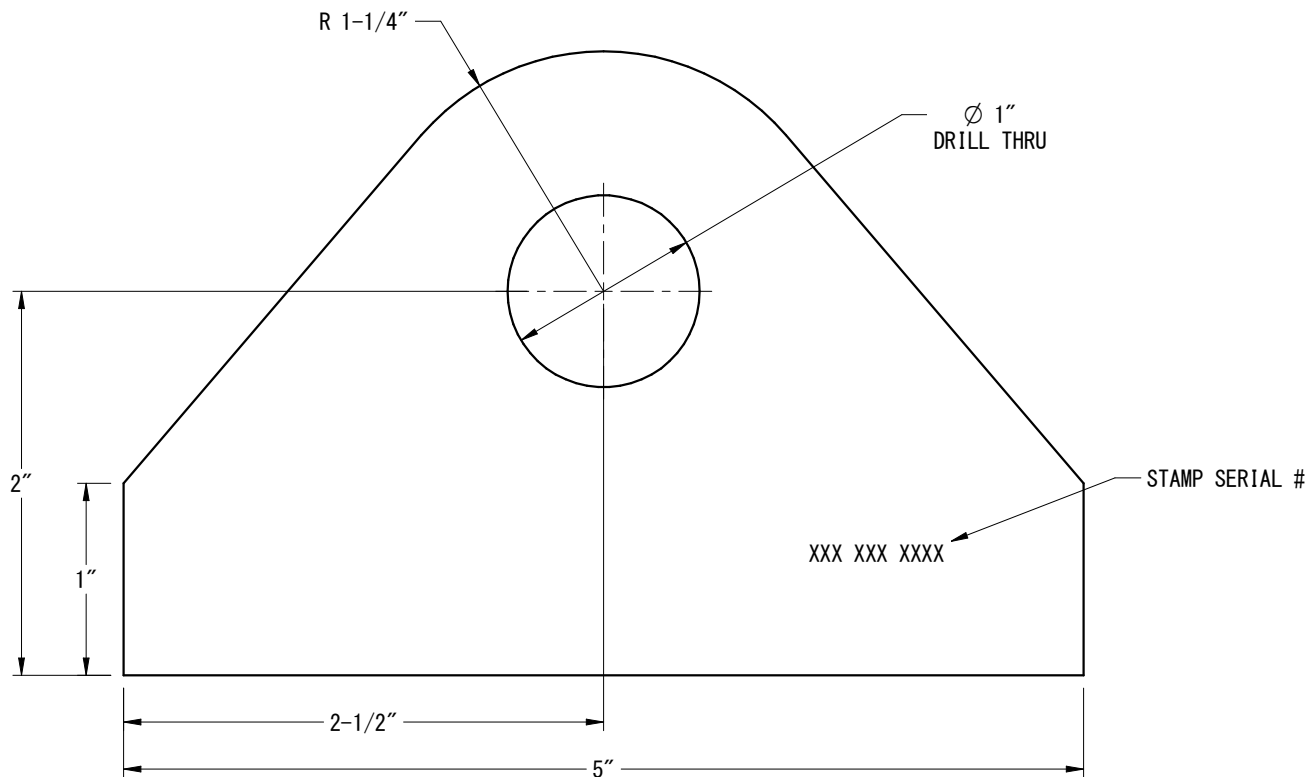
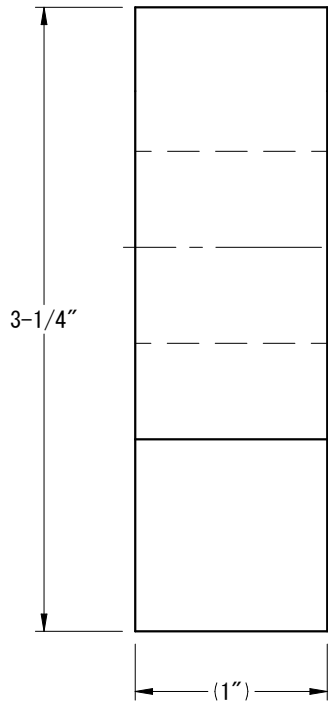
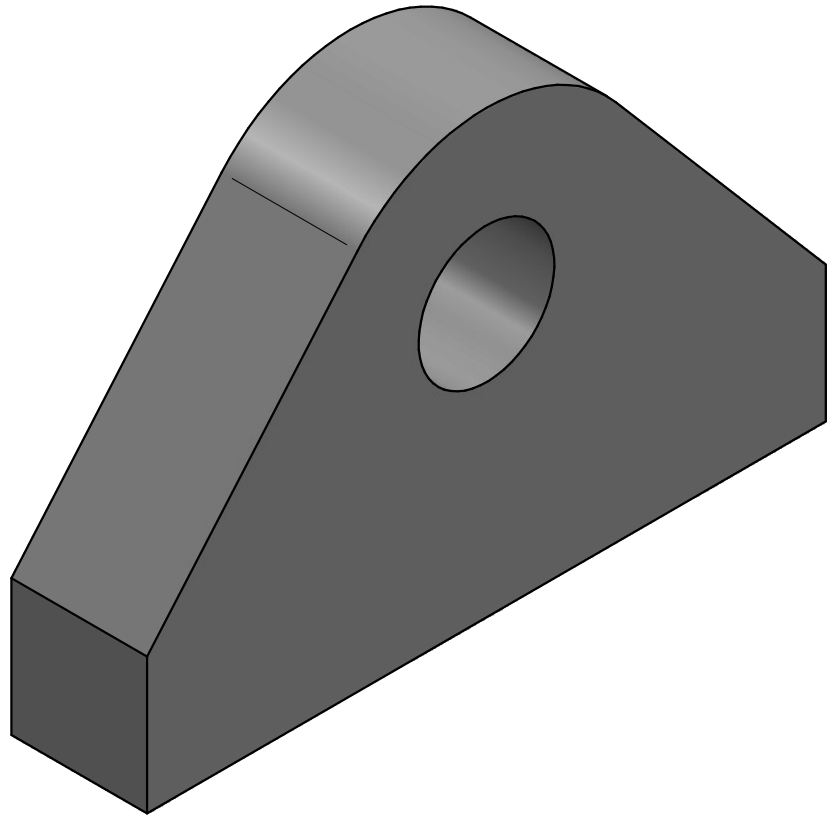



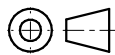
REVISION HISTORY			
REV.	DESCRIPTION	DATE	APPROVED
1	REDRAW & NOTES	9-17-09	AD
1	ISSUED FOR CONSTRUCTION	1-05-11	AD
2	HOLE SIZE INCREASED	05-24-17	RL
3	GENERAL NOTES UPDATED	03-30-22	RL



DRAWING APPROVAL  
BY \_\_\_\_\_  
DATE \_\_\_\_\_  
\_\_\_\_ AS DRAWN \_\_\_\_ AS NOTED

**GENERAL NOTES:**

1. WELDING PER AWS D1. 1.
2. ENSURE BASE STRUCTURE IS CAPABLE OF HANDLING FORCES APPLIED BY PADEYE.
3. ORIENT PADEYE IN DIRECTION OF SLING TO MINIMIZE SIDE LOAD.
4. PADEYE TO BE WELDED USING A MIN. 70 KSI YIELD ELECTRODE.
5. PADEYE MATERIAL IS GROUP II DESIGNATION AS PER AWS D1. 1.
6. FINAL LOAD TEST SHALL BE PERFORMED PER ASME B30. 20.
7. 100% MAGNETIC PARTICLE INSPECTION FOR FILLET WELDS AND 100% ULTRASONIC WELD INSPECTION FOR PENETRATION WELDS TO BE COMPLETED AFTER LOAD TEST IN ACCORDANCE WITH ASME SPECIFICATIONS.
8. BREAK ALL EDGES AND CORNERS UNLESS OTHERWISE SPECIFIED. CHAMFER EDGES APPROX. 1/8".
9. THIS PADEYE MEETS OR EXCEEDS ANSI/ASME B30.20 BELOW THE HOOK LIFTING DEVICES REQUIREMENTS.
10. COATING SYSTEM SHALL BE COLD GALVANIZED.
11. DESIGN TEMP. -20 DEG F TO 150 DEG F.
12. REQUEST ALL MTR'S W/ CHEMISTRY, MECHANICAL & TESTING REPORTS.

TOLERANCE UNLESS NOTED ALL FRACTIONAL $\pm 1/8"$ .0 $\pm 0.1$ .00 $\pm 0.02$ .000 $\pm 0.005$  ANGULAR TOLERANCE UNLESS NOTED ALL ANGULAR DIM. $\pm 1^\circ$  UNLESS NOTED ALL MACHINED SURFACES PER ASME/ANSI B46.1 125 $\sqrt{\mu\text{in}}$  REF # UPE-00475		10340 WALLISVILLE RD. HOUSTON, TEXAS 77013 WWW.LIFTING.COM · (713) 674-2266				THIS DRAWING CONTAINS CONFIDENTIAL INFORMATION. DATA CONTAINED WITHIN IS TO BE USED FOR INTENDED PURPOSES ONLY. NO DUPLICATION OR DISCLOSURE ALLOWED WITHOUT PRIOR WRITTEN CONSENT FROM BISHOP LIFTING PRODUCTS INC. ALL DUPLICATES SHALL BE RETURNED OR DESTROYED IMMEDIATELY UPON REQUEST!				
		CHECK OFF			TITLE					
					BLP STANDARD PADEYE 4.75 METRIC TONS					
		ACTION	APP.	DATE	THIRD ANGLE PROJECTION 		DWG NO. UPE-00475		REV. 3	
		DESIGN	HP	8-16-05						
DRAWN	AQ	3-30-23								
ENG.	HP	8-16-05								
CHK.	CH	3-30-23	B SIZE		SCALE: NTS		EST. WT. 3.1 lbm		SHEET 1 OF 1	