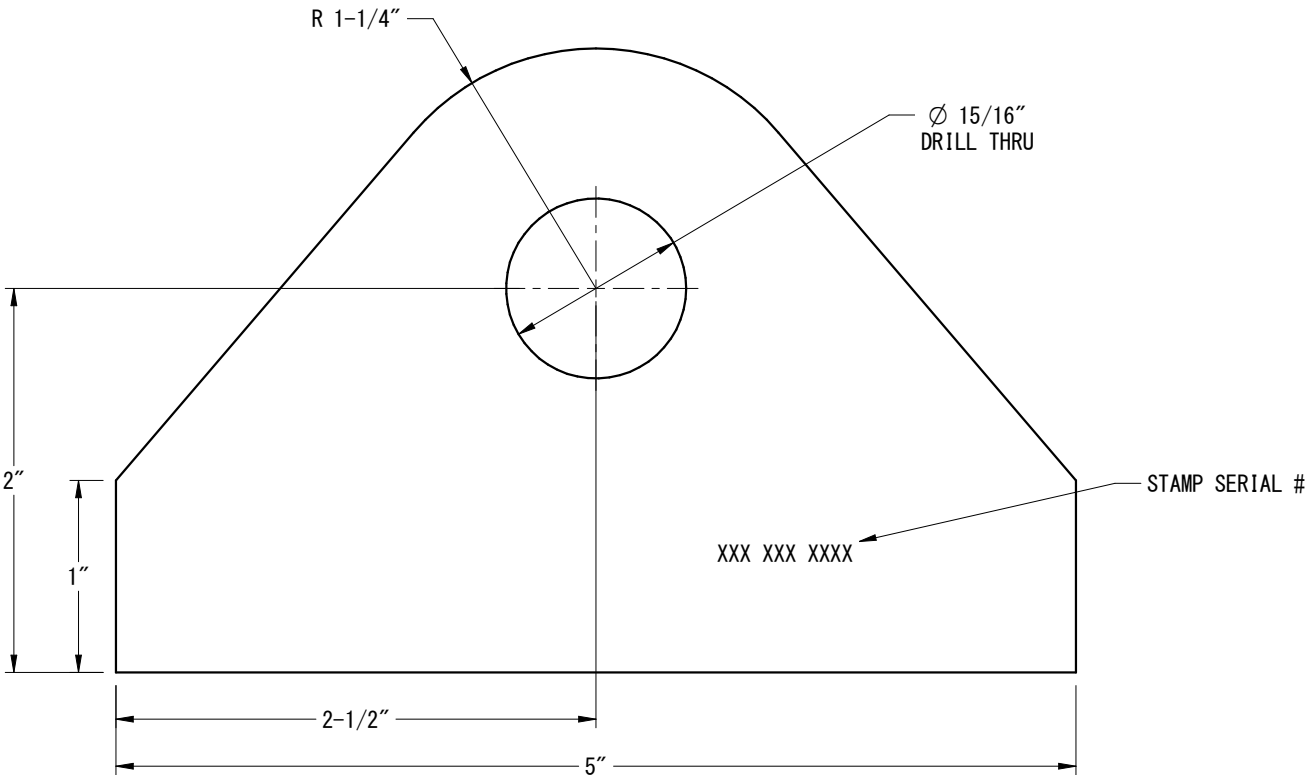
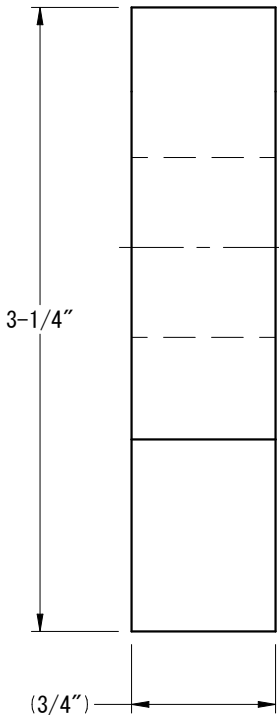
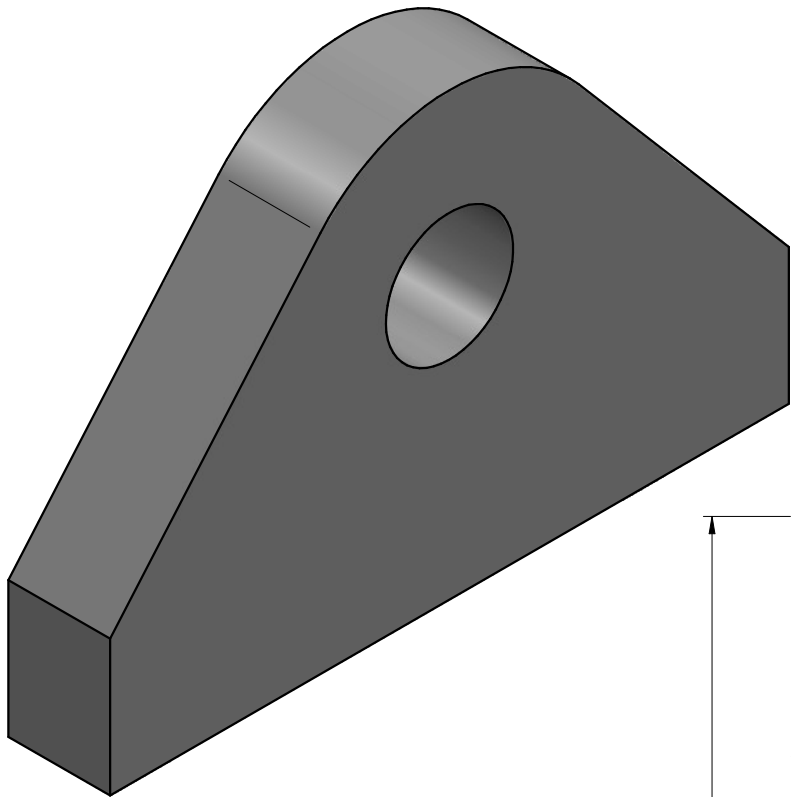



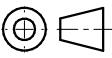
REVISION HISTORY			
REV.	DESCRIPTION	DATE	APPROVED
1	REDRAW & NOTES	9-17-09	AD
1	ISSUED FOR PRODUCTION	10/09/09	AD
2	GENERAL NOTES UPDATED	03-30-22	RL



GENERAL NOTES:

1. WELDING PER AWS D1.1.
2. ENSURE BASE STRUCTURE IS CAPABLE OF HANDLING FORCES APPLIED BY PADEYE.
3. ORIENT PADEYE IN DIRECTION OF SLING TO MINIMIZE SIDE LOAD.
4. PADEYE TO BE WELDED USING A MIN. 70 KSI YIELD ELECTRODE.
5. PADEYE MATERIAL IS GROUP II DESIGNATION AS PER AWS D1. 1.
6. FINAL LOAD TEST SHALL BE PERFORMED PER ASME B30.20.
7. 100% MAGNETIC PARTICLE INSPECTION FOR FILLET WELDS AND 100% ULTRASONIC WELD INSPECTION FOR PENETRATION WELDS TO BE COMPLETED AFTER LOAD TEST IN ACCORDANCE WITH ASME SPECIFICATIONS.
8. BREAK ALL EDGES AND CORNERS UNLESS OTHERWISE SPECIFIED. CHAMFER EDGES APPROX. 1/8".
9. THIS PADEYE MEETS OR EXCEEDS ANSI/ASME B30.20 BELOW THE HOOK LIFTING DEVICES REQUIREMENTS.
10. COATING SYSTEM SHALL BE COLD GALVANIZED.
11. DESIGN TEMP. -20 DEG F TO 150 DEG F.
12. REQUEST ALL MTR'S W/ CHEMISTRY, MECHANICAL & TESTING REPORTS.

DRAWING APPROVAL
BY _____
DATE _____
____ AS DRAWN ____ AS NOTED

TOLERANCE UNLESS NOTED ALL FRACTIONAL $\pm 1/8"$.0 ± 0.1 .00 ± 0.02 .000 ± 0.005 ANGULAR TOLERANCE UNLESS NOTED ALL ANGULAR DIM. $\pm 1^\circ$ UNLESS NOTED ALL MACHINED SURFACES PER ASME/ANSI B46.1 125 $\sqrt{\mu\text{in}}$ REF # UPE-00325	 <div>10340 WALLISVILLE RD. HOUSTON, TEXAS 77013 WWW.LIFTING.COM • (713) 674-2266</div>			THIS DRAWING CONTAINS CONFIDENTIAL INFORMATION. DATA CONTAINED WITHIN IS TO BE USED FOR INTENDED PURPOSES ONLY. NO DUPLICATION OR DISCLOSURE ALLOWED WITHOUT PRIOR WRITTEN CONSENT FROM BISHOP LIFTING PRODUCTS INC. ALL DUPLICATES SHALL BE RETURNED OR DESTROYED IMMEDIATELY UPON REQUEST!		
	CHECK OFF			TITLE		
	ACTION	APP.	DATE	THIRD ANGLE PROJECTION 		
	DESIGN	HP	8-16-05			
	DRAWN	AQ	3-30-23			
			ENG.	HP	8-16-05	DWG NO. UPE-00325
			CHK.	CH	3-30-23	
B SIZE			SCALE: NTS		EST. WT. 2.4 lbm	SHEET 1 OF 1