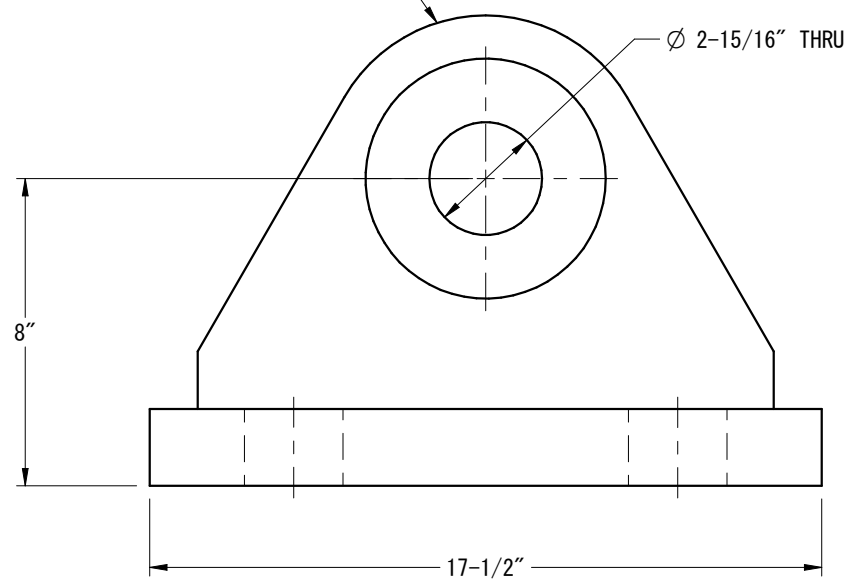
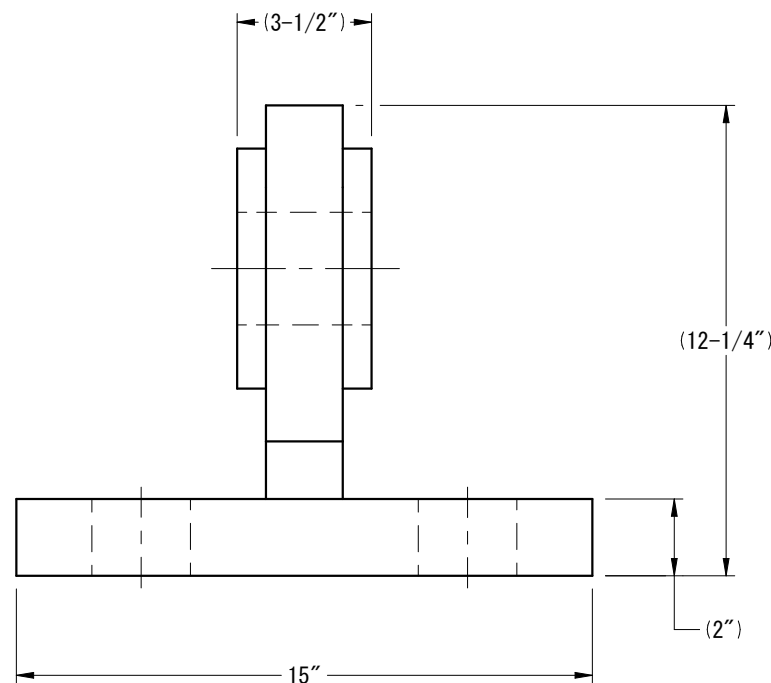


THIS PADEYE IS DESIGNED TO FIT A G-2130 CROSBY SHACKLE, 2-1/2" NOM.



\* NOTE  
KEEP LOAD CENTERED AND STABLE AT ALL TIMES DURING LIFTING.  
ONLY QUALIFIED PERSONNEL SHOULD USE THIS DEVICE.  
SAFE RIGGING & LIFTING PRACTICES SHALL BE USED AT ALL TIMES.  
CAUTION AVOID PINCH POINTS.


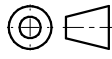
REVISION HISTORY			
REV.	DESCRIPTION	DATE	APPROVED
0	PRELIMINARY	02-21-19	RL
1	INTERNAL UPDATES	12-01-22	00



DRAWING APPROVAL  
BY \_\_\_\_\_  
DATE \_\_\_\_\_  
\_\_\_\_ AS DRAWN \_\_\_\_ AS NOTED

#### GENERAL NOTES:

1. WELDING PER AWS D1.1.
2. ENSURE BASE STRUCTURE IS CAPABLE OF HANDLING FORCES APPLIED BY PADEYE.
3. ORIENT PADEYE IN DIRECTION OF SLING TO MINIMIZE SIDE LOAD.
4. TESTING SHALL BE PERFORMED AS PER BLP PROCEDURE TO 2.0 X RATED CAPACITY.
5. BREAK ALL EDGES AND CORNERS UNLESS OTHERWISE SPECIFIED, CHAMFER EDGES APPROX. 1/8".
6. THIS PADEYE MEETS OR EXCEEDS ANSI/ASME B30.20 BELOW THE HOOK LIFTING DEVICES REQUIREMENTS.
7. COATING SYSTEM SHALL BE COLD GALVANIZED.
8. DESIGN TEMP. -20 DEG F TO 150 DEG F.

TOLERANCE UNLESS NOTED  ALL FRACTIONAL ± 1/16" .0 ± 0.1 .00 ± 0.02 .000 ± 0.005	CHECK OFF			 <div>125 McCARTY DRIVE HOUSTON, TEXAS 77029 WWW.LIFTING.COM · (713) 674-2266 <b>BISHOP LIFTING PRODUCTS</b></div>	THIS DRAWING CONTAINS CONFIDENTIAL INFORMATION. DATA CONTAINED WITHIN IS TO BE USED FOR INTENDED PURPOSES ONLY. NO DUPLICATION OR DISCLOSURE ALLOWED WITHOUT PRIOR WRITTEN CONSENT FROM BISHOP LIFTING PRODUCTS INC. ALL DUPLICATES SHALL BE RETURNED OR DESTROYED IMMEDIATELY UPON REQUEST!		
	ACTION	APP.	DATE				
	DESIGN	RL	02-21-19				
	DRAWN	RL	02-21-19				
ANGULAR TOLERANCE UNLESS NOTED ALL ANGULAR DIM. ± 1°	ENG.	RE	02-21-19	TITLE  <b>BLP PLATE MOUNTED PAD EYE</b> <b>RC 55 MT</b>			
	CHK.	CH	12-08-23				
UNLESS NOTED ALL MACHINED SURFACES PER ASME/ANSI B46.1 125 ✓µin	PROJECT: REF # UPE-05500			THIRD ANGLE PROJECTION		DWG NO.  PEP-05500	REV.  1
B SIZE		SCALE: NTS	EST. WT. 205 LBS		SHEET 1 OF 1		