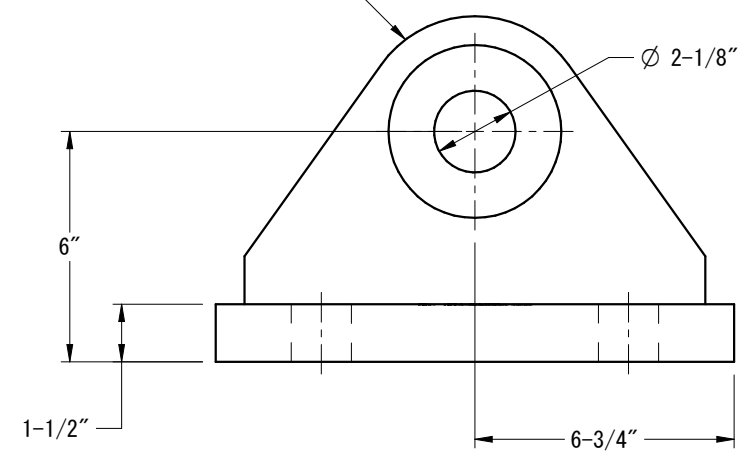
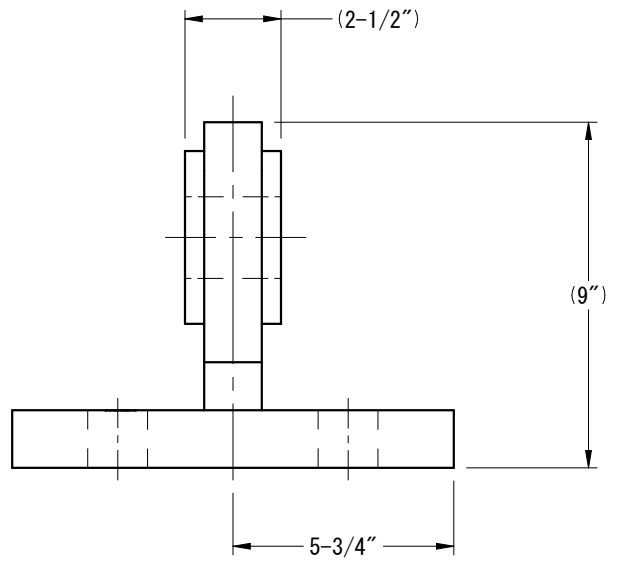
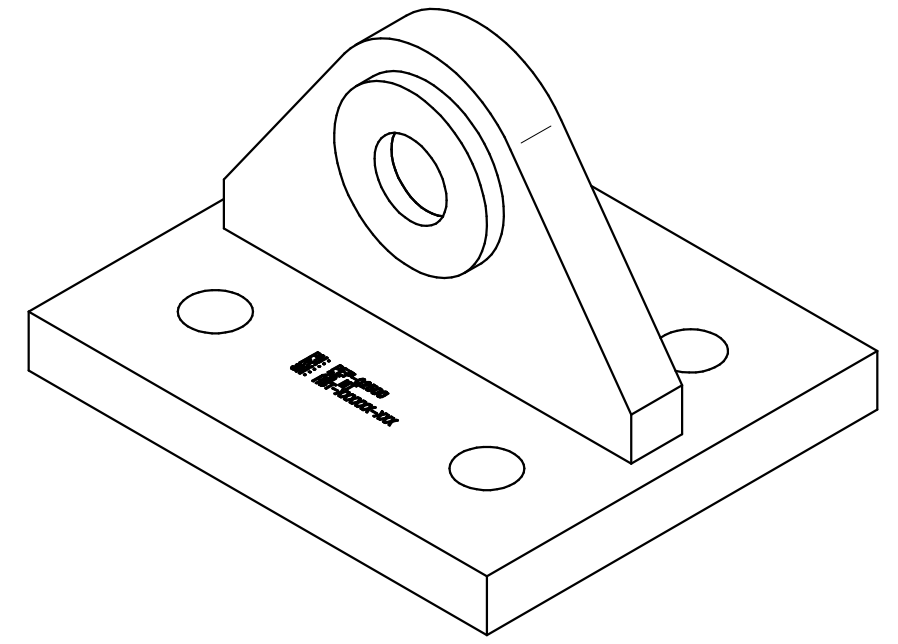


THIS PADEYE IS DESIGNED TO FIT A G-2130 CROSBY SHACKLE, 1-3/4 NOM.




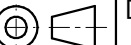
* NOTE
KEEP LIFTING LOAD (CENTER OF GRAVITY) CENTERED AND SYMMETRICAL TO TOP LIFTING LUG AT ALL TIMES.
ONLY QUALIFIED PERSONNEL SHOULD USE THIS DEVICE.
SAFE RIGGING & LIFTING PRACTICES SHALL BE USED AT ALL TIMES.
CAUTION AVOID PINCH POINTS.
DO NOT MODIFY THIS DEVICE OR CHANGE THE RATED CAPACITY WITHOUT CONSENT OF BISHOP LIFTING PRODUCTS.



DRAWING APPROVAL
BY _____
DATE _____
____ AS DRAWN ____ AS NOTED

- GENERAL NOTES:**
1. WELDING PER AWS D1.1.
 2. ENSURE BASE STRUCTURE IS CAPABLE OF HANDLING FORCES APPLIED BY PADEYE.
 3. ORIENT PADEYE IN DIRECTION OF SLING TO MINIMIZE SIDE LOAD.
 4. TESTING SHALL BE PERFORMED AS PER BLP PROCEDURE TO 2.0 X RATED CAPACITY.
 5. BREAK ALL EDGES AND CORNERS UNLESS OTHERWISE SPECIFIED, CHAMFER EDGES APPROX. 1/8".
 6. THIS PADEYE MEETS OR EXCEEDS ANSI/ASME B30.20 BELOW THE HOOK LIFTING DEVICES REQUIREMENTS.
 7. COATING SYSTEM SHALL BE COLD GALVANIZED.
 8. DESIGN TEMP. -20 DEG F TO 150 DEG F.

REVISION HISTORY			
REV.	DESCRIPTION	DATE	APPROVED
0	PRELIMINARY	11-02-20	RL
1	INTERNAL UPDATES	12-01-23	00

TOLERANCE UNLESS NOTED ALL FRACTIONAL ± 1/16" .0 ± 0.1 .00 ± 0.02 .000 ± 0.005 ANGULAR TOLERANCE UNLESS NOTED ALL ANGULAR DIM. ± 1° UNLESS NOTED ALL MACHINED SURFACES PER ASME/ANSI B46.1 125√μin	CHECK OFF			 BISHOP LIFTING WWW.LIFTING.COM · (713) 674-2266	THIS DRAWING CONTAINS CONFIDENTIAL INFORMATION. DATA CONTAINED WITHIN IS TO BE USED FOR INTENDED PURPOSES ONLY. NO DUPLICATION OR DISCLOSURE ALLOWED WITHOUT PRIOR WRITTEN CONSENT FROM BISHOP LIFTING PRODUCTS INC. ALL DUPLICATES SHALL BE RETURNED OR DESTROYED IMMEDIATELY UPON REQUEST!		
	ACTION	APP.	DATE				
	DESIGN	CP	06-25-16				
	DRAWN	RL	11-02-20				
ENG.	CP	06-25-16	TITLE BLP PLATE MOUNTED PADEYE 25 METRIC TONS				
CHK.	CH	12-01-23					
			THIRD ANGLE PROJECTION		DWG NO. PEP-02500	REV. 1	
PROJECT: JOB # UPE-02500			B SIZE	SCALE: NTS	EST. WT. 91 LBS	SHEET 1 OF 1	