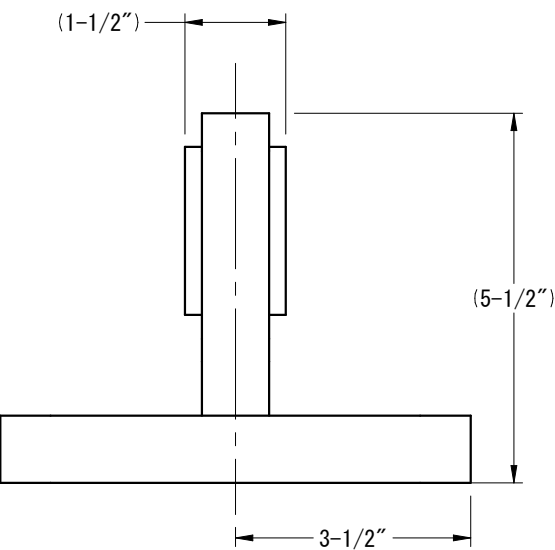
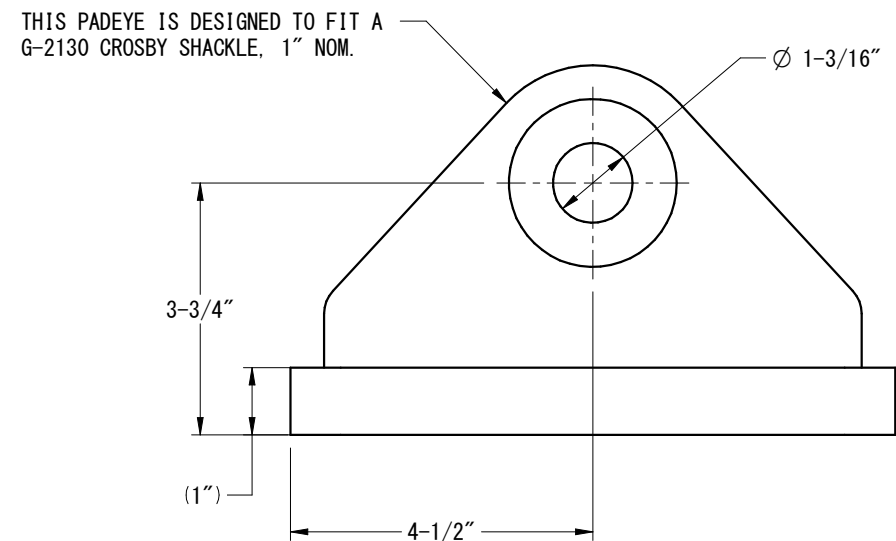
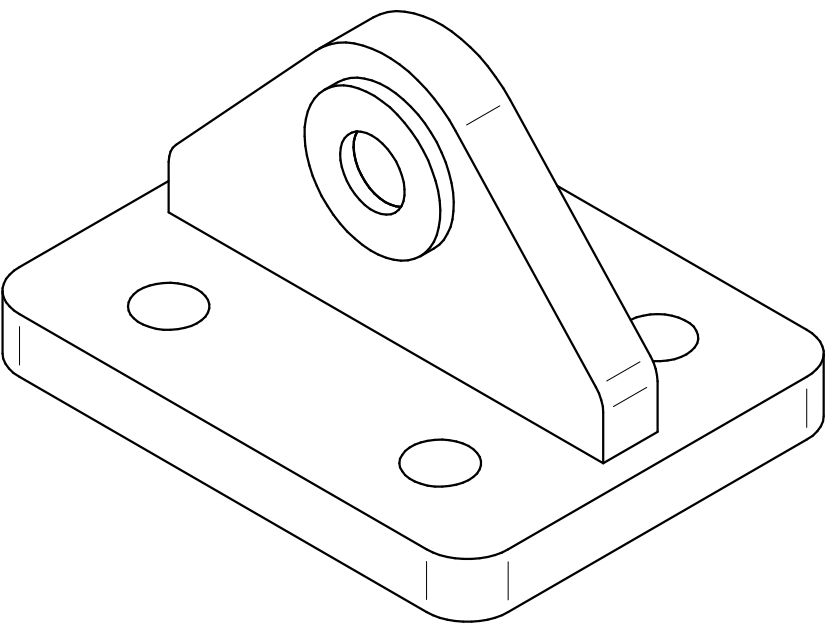
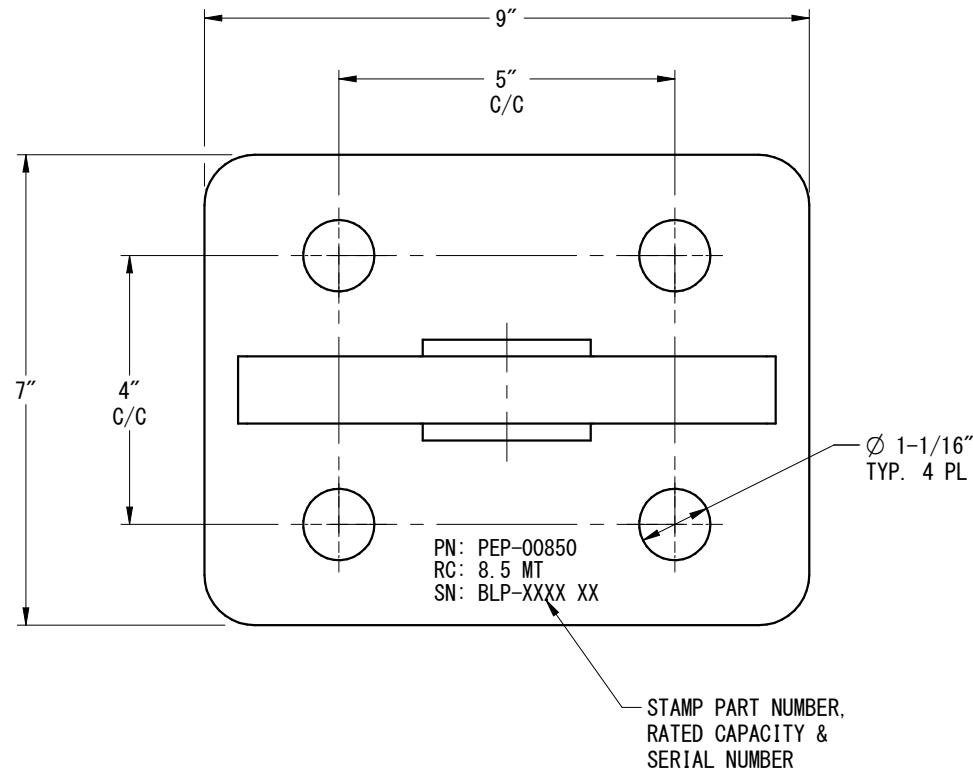



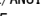
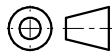
REVISION HISTORY			
REV.	DESCRIPTION	DATE	APPROVED
0	PRELIMINARY	05-13-16	CP
1	UPDATED WELD SIZE	09-05-23	00
2	INTERNAL UPDATES	11-29-23	00



DRAWING APPROVAL  
BY \_\_\_\_\_  
DATE \_\_\_\_\_  
\_\_\_\_ AS DRAWN \_\_\_\_ AS NOTED

**GENERAL NOTES:**

1. WELDING PER AWS D1.1.
2. ENSURE BASE STRUCTURE IS CAPABLE OF HANDLING FORCES APPLIED BY PADEYE.
3. ORIENT PADEYE IN DIRECTION OF SLING TO MINIMIZE SIDE LOAD.
4. TESTING SHALL BE PERFORMED AS PER BLP PROCEDURE TO 2.0 X RATED CAPACITY.
5. BREAK ALL EDGES AND CORNERS UNLESS OTHERWISE SPECIFIED, CHAMFER EDGES APPROX. 1/8".
6. THIS PADEYE MEETS OR EXCEEDS ANSI/ASME B30.20 BELOW THE HOOK LIFTING DEVICES REQUIREMENTS.
7. COATING SYSTEM SHALL BE COLD GALVANIZED.
8. DESIGN TEMP. -20 DEG F TO 150 DEG F.

TOLERANCE UNLESS NOTED	CHECK OFF			 <div>125 McCARTY DRIVE HOUSTON, TEXAS 77029 WWW.LIFTING.COM · (713) 674-2266 <b>BISHOP LIFTING PRODUCTS</b></div>	THIS DRAWING CONTAINS CONFIDENTIAL INFORMATION. DATA CONTAINED WITHIN IS TO BE USED FOR INTENDED PURPOSES ONLY. NO DUPLICATION OR DISCLOSURE ALLOWED WITHOUT PRIOR WRITTEN CONSENT FROM BISHOP LIFTING PRODUCTS INC. ALL DUPLICATES SHALL BE RETURNED OR DESTROYED IMMEDIATELY UPON REQUEST!		
ALL FRACTIONAL ± 1/16" .0 ± 0.1 .00 ± 0.02 .000 ± 0.005	ACTION	APP.	DATE				
	DESIGN	CP	05-13-16				
	DRAWN	CP	05-13-16				
ANGULAR TOLERANCE UNLESS NOTED ALL ANGULAR DIM. ± 1°	ENG.	CP	05-13-16	TITLE <b>BLP PLATE MOUNTED PAD EYE RC 8.5 MT</b>			
	CHK.	CH	12-01-23				
UNLESS NOTED ALL MACHINED SURFACES PER ASME/ANSI B46.1 125  in				THIRD ANGLE PROJECTION		DWG NO. <b>PEP-00850</b>	REV. <b>2</b>
	PROJECT: JOB # UPE-00850			B SIZE	SCALE: NTS	EST. WT. 25 LBS	SHEET 1 OF 1