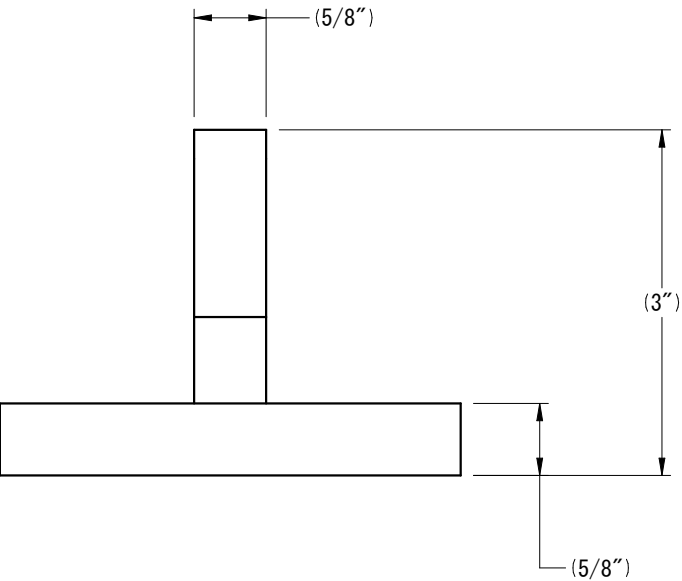
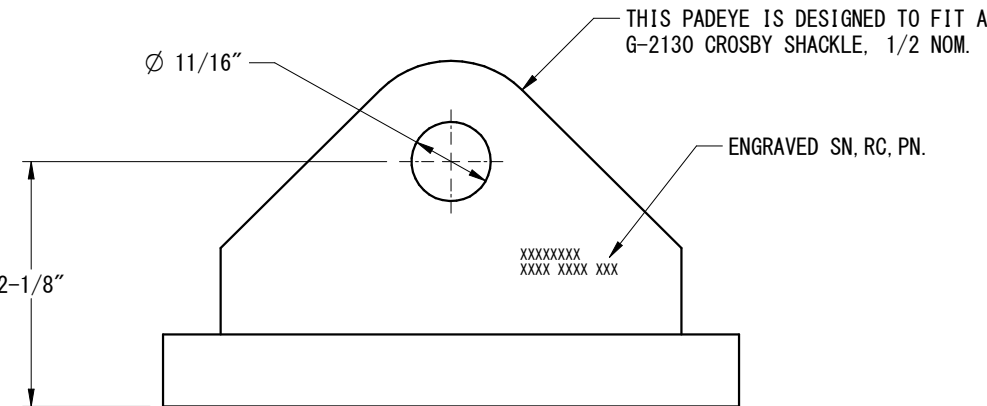
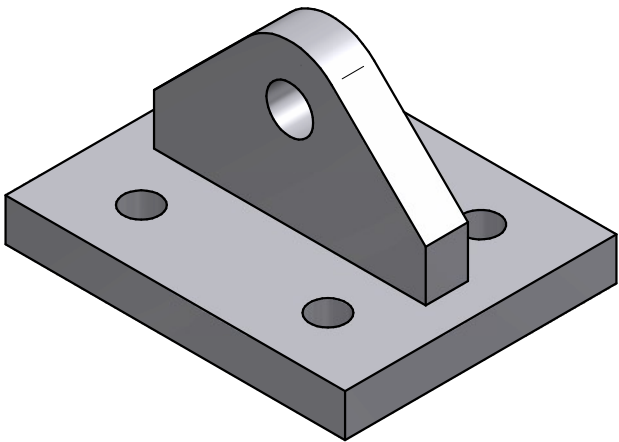
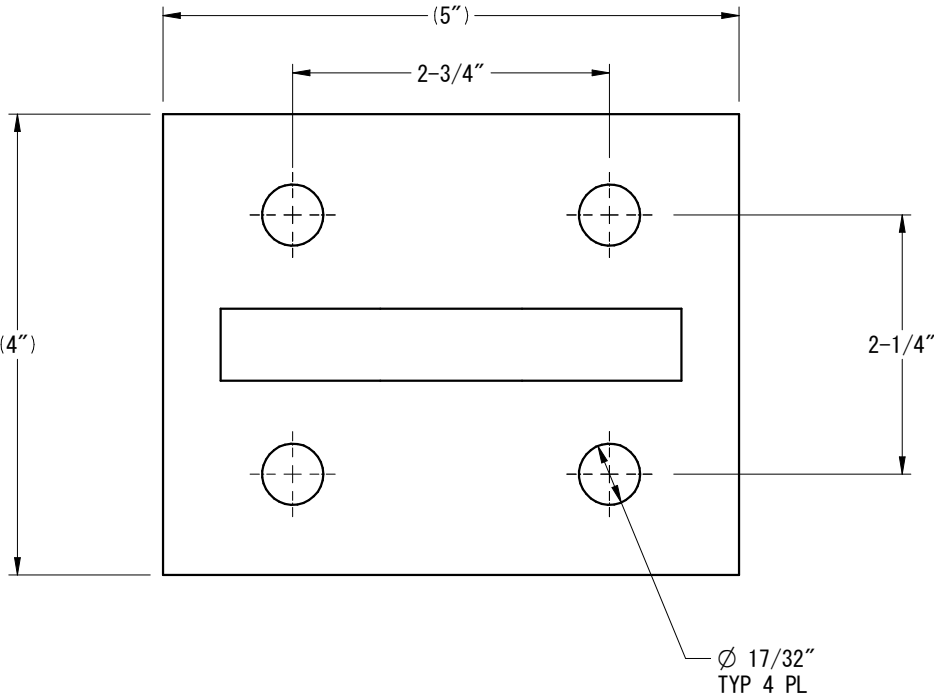



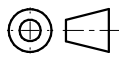
| REVISION HISTORY | | | |
|------------------|-----------------------|----------|----------|
| REV. | DESCRIPTION | DATE | APPROVED |
| 0 | PRELIMINARY | 12-9-16 | CH |
| 1 | GENERAL NOTES UPDATED | 04-14-22 | RL |
| 2 | UPDATED WELD SIZE | 09-05-23 | 00 |
| 3 | INTERNAL UPDATES | 11-29-23 | 00 |



DRAWING APPROVAL
BY _____
DATE _____
____ AS DRAWN ____ AS NOTED

GENERAL NOTES:

1. WELDING PER AWS D1.1.
2. ENSURE BASE STRUCTURE IS CAPABLE OF HANDLING FORCES APPLIED BY PADEYE.
3. ORIENT PADEYE IN DIRECTION OF SLING TO MINIMIZE SIDE LOAD.
4. TESTING SHALL BE PERFORMED AS PER BLP PROCEDURE TO 2.0 X RATED CAPACITY.
5. BREAK ALL EDGES AND CORNERS UNLESS OTHERWISE SPECIFIED, CHAMFER EDGES APPROX. 1/8".
6. THIS PADEYE MEETS OR EXCEEDS ANSI/ASME B30.20 BELOW THE HOOK LIFTING DEVICES REQUIREMENTS.
7. COATING SYSTEM SHALL BE COLD GALVANIZED.
8. DESIGN TEMP. -20 DEG F TO 150 DEG F.

| | | | | | | | |
|--|-----------------------------|------|----------|---|---|--------------------------|----------------|
| TOLERANCE UNLESS NOTED | CHECK OFF | | |  <div>125 McCARTY DRIVE HOUSTON, TEXAS 77029 WWW.LIFTING.COM · (713) 674-2266 BISHOP LIFTING PRODUCTS</div> | THIS DRAWING CONTAINS CONFIDENTIAL INFORMATION. DATA CONTAINED WITHIN IS TO BE USED FOR INTENDED PURPOSES ONLY. NO DUPLICATION OR DISCLOSURE ALLOWED WITHOUT PRIOR WRITTEN CONSENT FROM BISHOP LIFTING PRODUCTS INC. ALL DUPLICATES SHALL BE RETURNED OR DESTROYED IMMEDIATELY UPON REQUEST! | | |
| ALL FRACTIONAL ± 1/16" .0 ± 0.1 .00 ± 0.02 .000 ± 0.005 | ACTION | APP. | DATE | | | | |
| | DESIGN | CP | 6-25-16 | | | | |
| | DRAWN | CH | 12-9-16 | | | | |
| ANGULAR TOLERANCE UNLESS NOTED ALL ANGULAR DIM. ± 1° | ENG. | CP | 6-25-16 | TITLE BLP PLATE MOUNTED PADEYE 2 METRIC TONS | | | |
| | CHK. | CH | 11-30-23 | | | | |
| UNLESS NOTED ALL MACHINED SURFACES PER ASME/ANSI B46.1 125 ✓μin | PROJECT: JOB # ULTRA PADEYE | | | THIRD ANGLE PROJECTION |  | DWG NO. PEP-00200 | REV. 3 |
| | | | | B SIZE | | SCALE: NTS | EST. WT. 5 LBS |