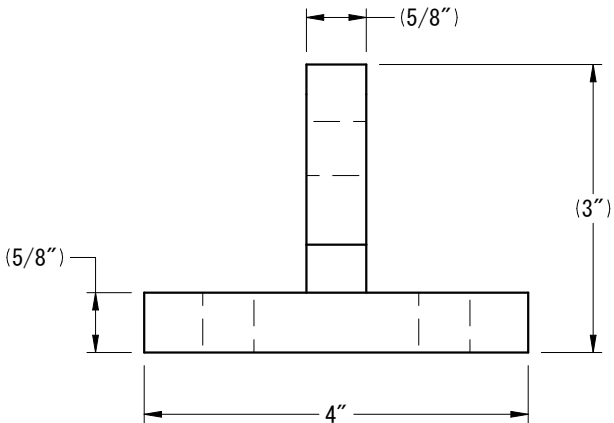
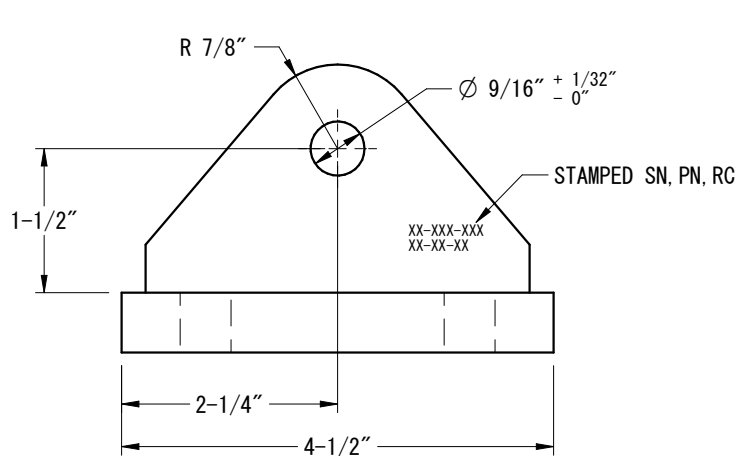
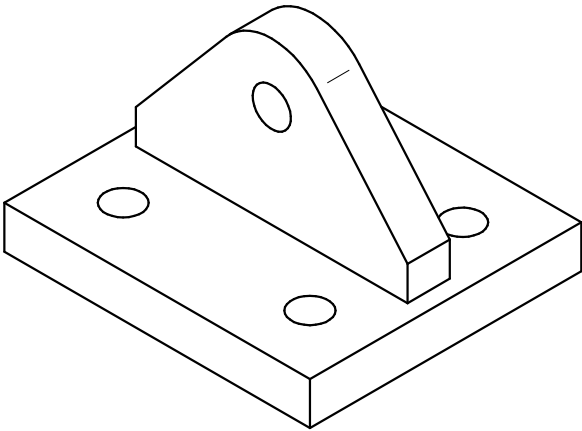
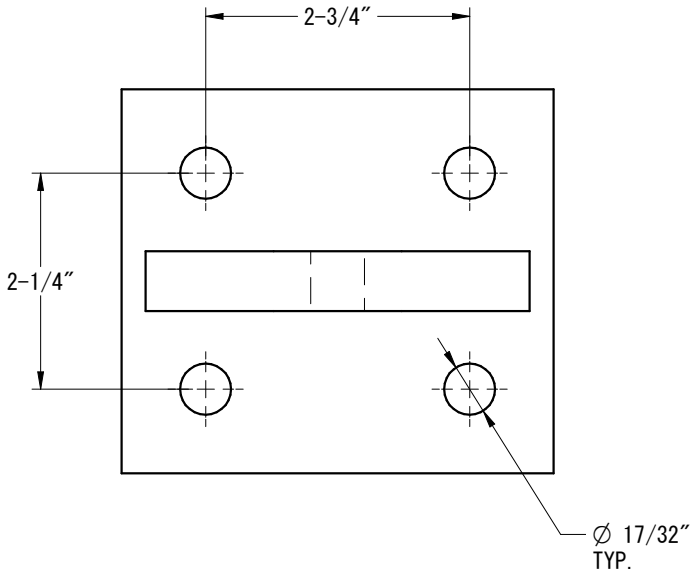


* NOTE
ONLY QUALIFIED PERSONNEL SHOULD USE THIS DEVICE.
SAFE RIGGING & LIFTING PRACTICES SHALL BE USED AT ALL TIMES.
CAUTION AVOID PINCH POINTS.


REVISION HISTORY			
REV.	DESCRIPTION	DATE	APPROVED
0	PRELIMINARY	7/07/23	00
1	INTERNAL UPDATES	11/29/23	00



DRAWING APPROVAL
BY _____
DATE _____
____ AS DRAWN ____ AS NOTED

GENERAL NOTES:

1. WELDING PER AWS D1.1.
2. ENSURE BASE STRUCTURE IS CAPABLE OF HANDLING FORCES APPLIED BY PADEYE.
3. ORIENT PADEYE IN DIRECTION OF SLING TO MINIMIZE SIDE LOAD.
4. TESTING SHALL BE PERFORMED AS PER BLP PROCEDURE TO 2.0 X RATED CAPACITY.
5. BREAK ALL EDGES AND CORNERS UNLESS OTHERWISE SPECIFIED, CHAMFER EDGES APPROX. 1/8".
6. THIS PADEYE MEETS OR EXCEEDS ANSI/ASME B30.20 BELOW THE HOOK LIFTING DEVICES REQUIREMENTS.
7. COATING SYSTEM SHALL BE COLD GALVANIZED.
8. DESIGN TEMP. -20 DEG F TO 150 DEG F.

 WWW.LIFTING.COM • (713) 674-2266	TITLE BLP PLATE MOUNTED PAD EYE RC 1.5 METRIC TON			
CHECK OFF			THIS DRAWING CONTAINS CONFIDENTIAL INFORMATION. DATA CONTAINED WITHIN IS TO BE USED FOR INTENDED PURPOSES ONLY. NO DUPLICATION OR DISCLOSURE ALLOWED WITHOUT PRIOR WRITTEN CONSENT FROM BISHOP LIFTING PRODUCTS, INC. ALL DUPLICATES SHALL BE RETURNED OR DESTROYED IMMEDIATELY UPON REQUEST!	
ACTION	APP.	DATE	TOLERANCE UNLESS NOTED ALL FRACTIONAL ± 1/8" .0 ± 0.1 .00 ± 0.02 .000 ± 0.005	ANGULAR TOLERANCE UNLESS NOTED ALL ANGULAR DIM. ± 1° PROJECT REF # PEP-00150
DESIGN	CP	06/25/15	UNLESS NOTED ALL MACHINED SURFACES PER ASME/ANSI B46.1 125 µin	
DRAWN	OO	11/29/23	THIRD ANGLE PROJECTION	
ENG.	CH	07/20/23	DWG NO. PEP-00150	
CHK.	CH	11/30/23	REV. 1	
B SIZE		SCALE: NTS	EST. WT. 4 lbm	SHEET 1 OF 1