

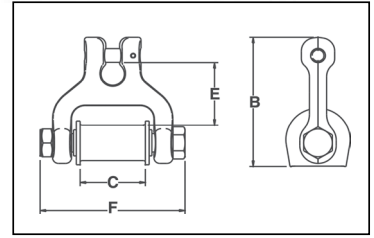
Sling Saver® Fittings / Accessories



**S-282
WEB/CHAIN
CONNECTOR**

Designed around the same concept as our S-280 Web Connector, the S-282 Chain Connector makes the connection from your web sling to existing chain quick and easy.

- Available in three sizes:
 - 3-1/4 Ton Working Load Limit - 2" Webbing to 3/8" (10mm) chain.
 - 4-1/2 Ton Working Load Limit - 1-1/2" (3" Tapered Webbing) to 1/2" (13mm) chain.
 - 6-1/4 Ton Working Load Limit - 2" (4" Tapered Webbing) to 5/8" (16mm) chain.
- Alloy Steel (Quenched and Tempered).
- Each Connector has a Product Identification Code (PIC) for material traceability along with a Working Load Limit and the name Crosby forged into it.
- Uses same spool and cover as S-280 Web Connector.
 - Replacement Kit for Spool and Web Cover available
- No retaining pin to snag sling material.



Sling Saver®

Load Rated



S-282 Web / Chain Connector

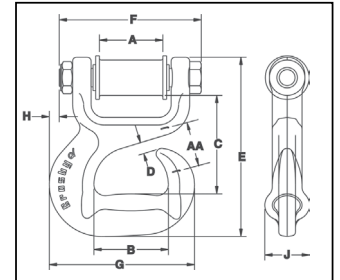
| Round Sling Size (No.) | Web Slings* | | | Chain Size | Working Load Limit (Tons) † | S-282 Stock No. | Weight Each (lbs.) | Dimensions (in.) | | | |
|------------------------|---------------------|-----------------|-----|------------|-----------------------------|-----------------|--------------------|------------------|------|------|------|
| | Webbing Width (in.) | Eye Width (in.) | Ply | | | | | B | C | E | F |
| 1 & 2 | 2 | 2 | 2 | 3/8 | 3-1/4 | 1021084 | 1.9 | 4.33 | 2.13 | 2.11 | 4.77 |
| 3 | 3 | 1.5 | 2 | 1/2 | 4-1/2 | 1021093 | 2.8 | 5.04 | 1.63 | 2.44 | 4.54 |
| 4 | 4 | 2 | 2 | 5/8 | 6-1/4 | 1021100 | 4.3 | 5.69 | 2.13 | 2.54 | 5.31 |

* NOTE: Designed for use with Type III, (Eye & Eye), Class 7, 2 Ply web slings. † Maximum Proof Load is 2 times the Working Load Limit. Minimum Ultimate Strength is 4 times the Working Load Limit.



**S-287
CHOKER HOOK**

- Available in 2 sizes: 3-1/4 Tons (2" webbing) and 4-1/2 Tons (3" webbing)
- Forged Alloy Steel – Quenched & Tempered
- Design factor of 5 to 1.
- Each Connector has a Product Identification Code (PIC) for material traceability along with a Working Load Limit and the name Crosby forged into it.
- Special design of hook protects the synthetic sling when dropped or dragged.
- Designed to reduce friction, abrasion, and fraying in choker area.
- Uses same spool and cover as S-280 Web Connector.
 - Replacement Kit for Spool and Web Cover available.
- No retaining pin to snag sling material.



Sling Saver®



Load Rated



Crosby Sling Saver hardware meets the requirements for minimum stock diameter or thickness, and effective contact width shown in the Recommended Standards Specification for Synthetic Polyester Round Slings by the Web Sling & Tie Down Association. WSTDA-RS1 (revised 2010)

S-287 Sliding Choker Hook

| Round Sling Size (No.) | Web Slings* | | | Working Load Limit (Tons) † | S-287 Stock No. | Weight Each (lbs.) | Dimensions (in.) | | | | | | | | | |
|------------------------|---------------------|-----------------|-----|-----------------------------|-----------------|--------------------|------------------|------|------|-----|------|------|------|------|------|------|
| | Webbing Width (in.) | Eye Width (in.) | Ply | | | | A | B | C | D | E | F | G | H | J | AA |
| 1 & 2 | 2 | 2 | 2 | 3-1/4 | 1021909 | 3.7 | 2.13 | 2.50 | 3.32 | .38 | 6.03 | 4.77 | 4.88 | .34 | 1.50 | 1.50 |
| 3 | 3 | 1.5 | 2 | 4-1/2 | 1021918 | 6.1 | 1.63 | 3.50 | 3.67 | .38 | 7.06 | 4.53 | 6.51 | 1.36 | 1.88 | — |

* NOTE: Designed for use with Type III, (Eye & Eye), Class 7, 2 Ply web slings. † Maximum Proof Load is 2 times the Working Load Limit. Minimum Ultimate Strength is 4 times the Working Load Limit.

SLING SAVER FITTINGS