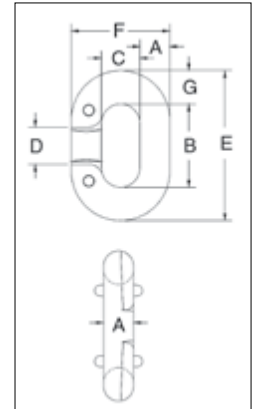


## G-335



- Forged steel - Quenched & Tempered.
- Integral rivets join the two halves.
- After making connections, rivets must be peened.
- All sizes have countersunk rivet holes.
- Meets or exceeds the performance requirements of Federal Specifications RR-C-271G, Type II, except for those provisions required of the contractor.
- Not suitable for use with Grade 80 or Grade 100 chain and chain slings used in overhead lifting.



## G-335 "Missing Link"® Replacement Links

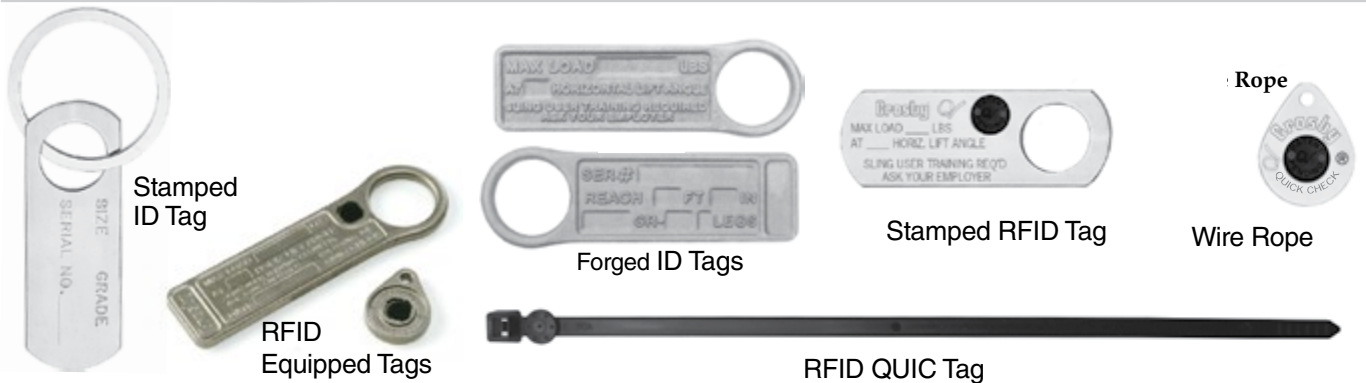


Chain Size (in)	Stock No.	Working Load Limit (lb)	Links Per Box	Weight Per 100 (lb)	Dimensions (in)						
					A	B	C	D	E	F	G
*1/4	1013110	1325	10	6.25	.28	.88	.44	.44	1.50	1.00	.31
3/8	1013156	2750	10	20.00	.41	1.13	.56	.56	2.06	1.38	.47
7/16	1013174	3625	10	27.50	.47	1.28	.59	.59	2.34	1.53	.53
1/2	1013192	4750	10	37.50	.53	1.47	.66	.66	2.66	1.72	.59
5/8	1013236	7250	10	72.50	.66	1.81	.78	.81	3.31	2.09	.75
3/4	1013254	10250	10	122.50	.78	2.13	.94	1.06	3.88	2.50	.88
7/8	1013272	12000	Bulk	175.00	.91	2.50	1.13	1.13	4.50	2.94	1.00
† 1	1013290	15500	Bulk	250.00	1.03	2.75	1.25	1.25	5.00	3.31	1.13

4:1 Design Factor. \*Rivets Only - No interlocking lugs. †Has reinforced rivet holes.

6

## SLING IDENTIFICATION TAG KITS



### Stamped ID Tags

- Heavy duty, pre-stamped, zinc-plated metal tag.
- 4-1/8" x 1-7/16" tag dimensions.
- 2-1/2" diameter metal attaching ring.
- Tag pre-stamped for simple inclusion of sling type, Working Load Limit, reach, serial number, chain size and grade.

### ID Tags

- Heavy Duty tags.
- 1-5/16" diameter ring opening (will fit 1/4" - 5/8" A-1337).
- Chain tags meet requirements of ASME B30.9 for Sling Identification.
- Raised edge and recessed pads to protect lettering.
- Raised lettering for quick reference.

Operating Frequency: 13.5MHz

ID Tag Stock No.	Carton Qty.	Weight Per Carton (lb)
115244	50	10.55

Stock No.	Style	Material Type	RFID Equipped	Tag Size (in)	Weight Each (lb)
115369	Chain	Cast Stainless Steel	Yes	6-5/16 x 1-5/8	.46
115350	Wire Rope	Cast Stainless Steel	Yes	1-11/16 x 1-5/16	.07
115217	Chain	Forged Steel	No	5-3/4 x 1-7/8	.40
115353	Chain	Stamped Zinc Plated Steel	Yes	5-3/4 x 1-5/8	.29
115355	Wire Rope	Stamped Zinc Plated Steel	Yes	1-11/16 x 1-5/16	.04
1224692	Zip Tie	High Crystalline Polyamide	Yes	7.625	.05