



METRIC MACHINERY EYE BOLTS

Dimensions in Millimeters – Some Sizes Available in Stainless Steel on a Special Basis.



Distributed By
WESTECH RIGGING SUPPLY
Visit Us Online at: www.WestechRigging.com
Call Us Toll Free at: 800-442-7475
Call Us or Visit Our Stores: Monday - Friday, 8:00am - 5:30pm Pacific
4140 West 11th Avenue
Eugene, Oregon 97402
2439 McGilchrist St SE
Salem, Oregon 97302

FORGED • CARBON STEEL • SELF-COLORED • SHOULDER PATTERN

Part No.	Metric Size	Approx. Equivalent in Inches	A Thread Size	B Shank Length, mm	C I.D. Eye, mm	Approx. Wt. Per 100 Pcs. in Lbs.	Working Load Limit in Kgs.	Working Load Limit in Lbs.
13805 5	M6	1/4"	M6 x 1.0	25.4	19	6	210	462
13825 3	M7	5/16"	M7 x 1.0	28.5	22	10	370	814
13845 1	M8	3/8"	M8 x 1.25	31.7	25	16	450	992
13865 9	M10	7/16"	M10 x 1.5	35.0	28	21	740	1,628
13885 7	M12	1/2"	M12 x 1.75	38.0	30	38	1,030	2,266
13905 2	M14	9/16"	M14 x 2.0	44.5	35	73	1,600	3,520
13925 0	M16	5/8"	M16 x 2.0	44.5	35	73	1,600	3,520
13948 9	M18	3/4"	M18 x 2.5	51.0	38	104	2,140	4,708
13968 7	M20	7/8"	M20 x 2.5	57.0	43	161	2,860	6,292
13988 5	M24	1"	M24 x 3.0	63.5	46	231	3,850	8,470
14008 9	M27	1-1/8"	M27 x 3.0	70.0	51	335	5,200	11,440
14031 7	M30	1-1/4"	M30 x 3.5	76.0	55	439	6,400	14,080
14051 5	M36	1-1/2"	M36 x 4.0	89.0	63	731	8,970	19,734

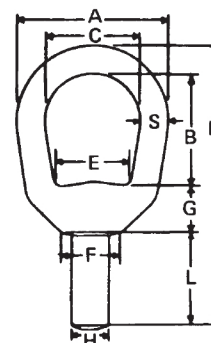
DROP FORGED LIFTING EYES

Drop forged from C-1035 steel, heat treated. Available blank or threaded. Self-colored finish is standard; hot galvanized or other finishes supplied on a special basis. Used in lifting applications where larger eyes are required. When ordering prefix stock number with letter "B" (blank) or "T" (threaded) as required. Loads are based on a safety factor of 5 to 1. Working loading limits for lifting eyes are based on a straight vertical lift in a gradually increasing manner, and should never be used for angular lifts.



LIFTING EYES – SELF-COLORED

Stock Number	Bail Size	Blank Part No.	Threaded Part No.	Threaded Working Load Limit
C-186	1/4"	15005 7	15505 2	860
C-187	5/16"	15010 1	15510 6	1260
C-185	3/8"	15015 6	15515 1	2200
C-181	1/2"	15020 0	15520 5	3600
C-184	5/8"	15025 5	15525 0	5200
C-188	3/4"	15030 9	15530 4	7000



Stock Number	Shank		Dimensions – Inches								Thread Length	Weight Per 100	
	H	L	A	C	B	E	F	G	S	R		Blank	Threaded
C-186	5/16"	1"	1-1/4"	3/4"	1-1/16"	19/32"	1/2"	3/8"	1/4"	2-11/16"	7/8"	12	11
C-187	3/8"	1-1/8"	1-5/8"	1"	1-1/4"	3/4"	9/16"	1/2"	5/16"	3-3/16"	1"	22	22
C-185	1/2"	1-1/4"	2"	1-1/4"	1-1/2"	1"	13/16"	5/8"	3/8"	3-3/4"	1-1/8"	41	38
C-181	5/8"	1-1/2"	2-1/2"	1-1/2"	2"	1-3/16"	1"	11/16"	1/2"	4-11/16"	1-3/8"	81	74
C-184	3/4"	1-7/8"	3"	1-3/4"	2-3/8"	1-3/8"	1-1/8"	7/8"	5/8"	5-3/4"	1-3/4"	139	129
C-188	7/8"	2"	3-1/2"	2"	2-5/8"	1-5/8"	1-5/16"	15/16"	3/4"	6-5/16"	1-7/8"	222	214