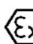


CE
LA Series

LEVER CHAIN HOIST

FEATURES

- * Dual rated with more choices of Capacity**
- * Hook blocks are bolted allowing easy disassembly for complete hook inspection**
- * Lightweight and durable all steel construction with powder coated finish and plated external components to resist corrosion**
- * Premium Grade 80 Zinc plated alloy load chain manufactured in USA**
- * Self adjusting double pawl disc type mechanical load brake insures control**
- * Horseshoe chain guard allows operation in any orientation**
- * Optional Overload Protection is by one way clutch that will only slip in the lift direction.**
- * Optional Shipyard or Self Locking Hooks**

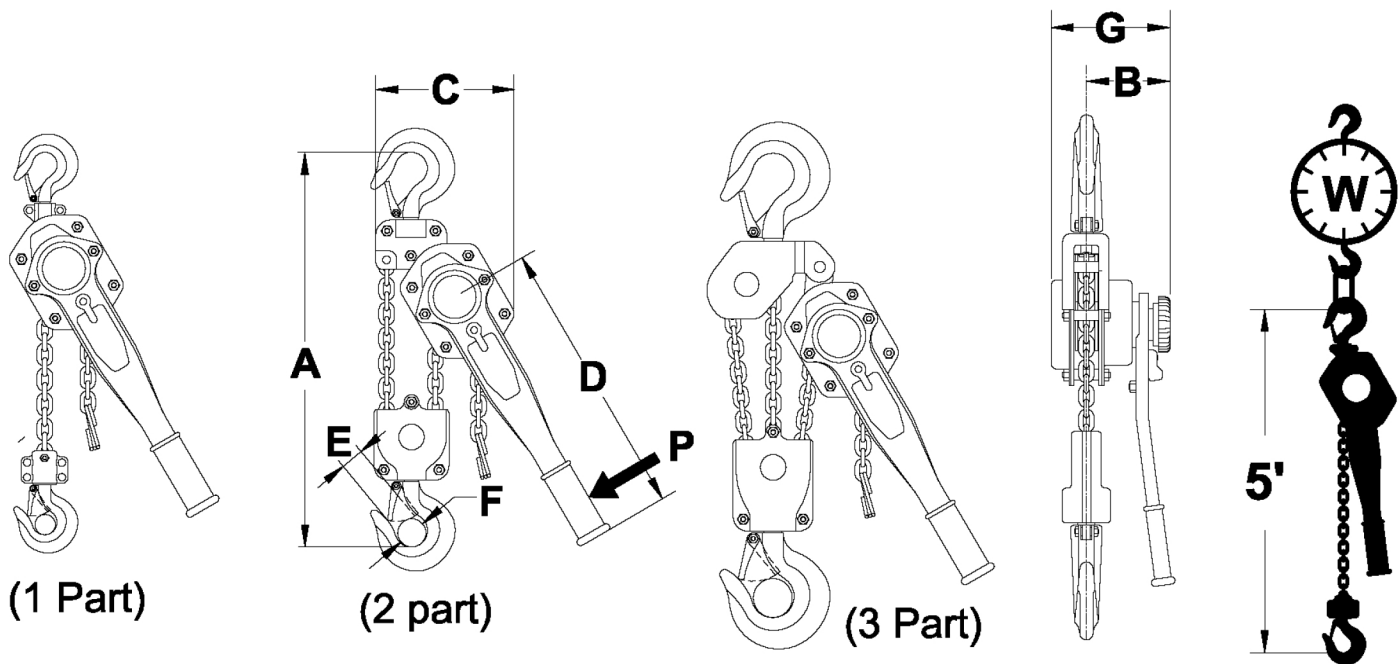
*** Meets: ASME/ANSI B30.21, OSHA, NASA-STD-8719.9 and EU Directives: 98/37/EC ATEX rated  II 3 GD c IIB 54° C X for limited use in Hazardous Environments**

DUAL RATED

US Ton	Metric Tonne
3/4T	0.8t
1T	1.0t
1 3/4T	1.6t
2 1/4T	2.0t
2 3/4T	2.5t
3 1/2T	3.2t
7T	6.3t
10T	9.0t



**HORSESHOE
SHAPE
CHAIN GUIDE**



(WLL) Working Load Limit				SPECIFICATIONS (Inches and pounds)												
Base Model	US Ton	Metric Tonne	* Min. Load Lbs	* Min. Load Kg	Chain	Parts	A"	B"	C"	D"	E"	F"	G"	P (Lbs)	W (Lbs) / Ft Lift	W (1) (Lbs) 5 Ft Lift
LA008	¾+	0.8	44	20	C6X18Z	1	13.4	3.9	5.2	10.5	1.02	0.98	6.2	47	0.54	14.9
LA010	1+	1.0	44	20	C6X18Z	1	13.4	3.9	5.2	12.1	1.02	0.98	6.2	51	0.54	15.3
LA016	1 ¾	1.6	70	32	C7X21Z	1	15.7	4.4	5.7	14.0	1.14	1.18	7.2	66	0.74	24.1
LA020	2 ¼	2.0	88	40	C8X24Z	1	18.1	4.6	7.6	14.0	1.38	1.30	8.1	66	0.92	36.2
LA025	2 ¾	2.5	110	50	C9X27Z	1	19.1	4.6	7.6	14.0	1.38	1.30	8.1	74	1.25	37.9
LA032	3 ½	3.2	141	64	C10X28Z	1	20.5	4.8	7.8	16.5	1.46	1.42	8.3	72	1.50	44.8
LA063	7	6.3	278	126	C10X28Z	2	25.2	4.8	9.1	16.5	1.69	1.69	8.3	74	3.00	66.3
LA090	10	9.0	396	180	C10X28Z	3	28.7	4.8	13.3	16.5	1.85	1.73	8.3	76	4.50	110.6

(1) Shipping weight can be estimated by adding approx. 15% to "W" hanging weight

* Minimum Load is the load required to activate the automatic load brake.

Standard lift = 5, 10, 15 and 20 Ft. Custom lifts are available

Option: V = Overload Protection, **new design one-way operation will lower any load.**

S = Shipyard Hooks Includes top and bottom Available for 1.5 & 3t only.

L = Self Locking Hooks includes top and bottom

Order by descriptive model number,

Example: Model LA032-20VL

Base Model

Lift

Option

V = Overload Protection
L = Self locking Hooks.



Before using these products; Read and follow instructions in the operator's manual. Never exceed capacity. Do not use for lifting people or loads over people



Distributed By

WESTECH RIGGING SUPPLY

Visit Us Online at: www.WestechRigging.com

Call Us Toll Free at: 800-442-7475

Call Us or Visit Our Stores: Monday - Friday, 8:00am - 5:30pm Pacific

4140 West 11th Avenue
Eugene, Oregon 97402

2439 McGilchrist St SE
Salem, Oregon 97302