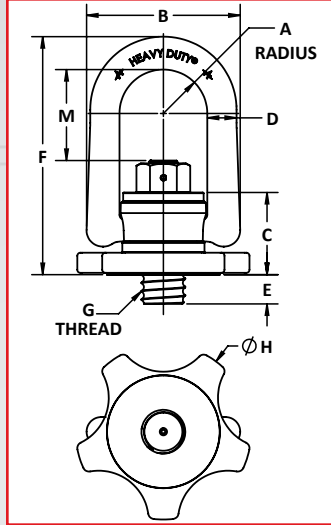


SPIN-N-LOK™ HOIST RING

1. Ideal for lifting and moving road plates
2. Star base spins and engages thread into weld in insert
3. Replaceable stud

- Pivots 180° and Swivels 360° Under Load
- Material: High Tensile Alloy Steel
- Finish: Black Oxide
- Design Factor: Minimum of 5:1
- Magnetic Particle Inspected Per ASTM 1444

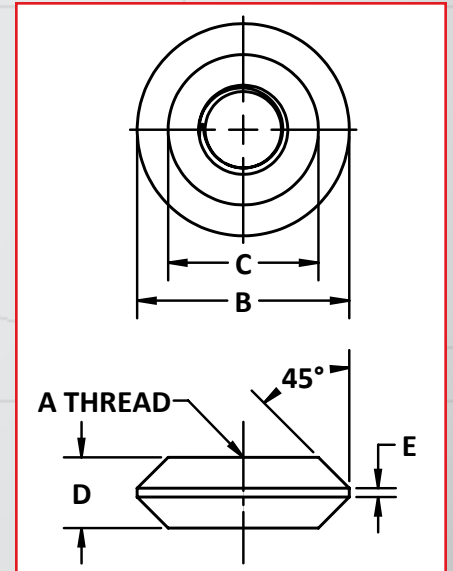
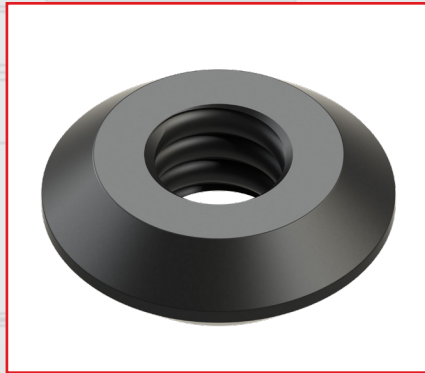


Part No.	Rated Load (lbs)	A	B	C	D	E +/- .12	F	G	Thread Type	H	M	Weight (lbs)
36960	10000	1.4	5.1	2.8	1	1	8 1/8	1 1/4	COIL	6	2.95	12.20
36965	10000	1.4	5.1	2.8	1	1	8 1/8	1 1/2	COIL	6	2.95	13.35

* Customized Threads Available Upon Request

WELD-IN THREADED INSERTS

- Material: High Tensile Alloy Steel
- Certified Heat Treatment
- Welding instructions included with each shipment

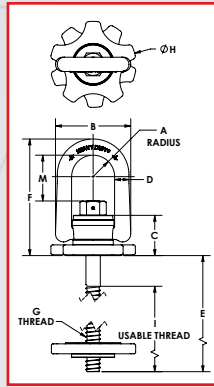


Part No.	Thread Type	A	B	C	D	E
36986	COIL	1 1/4	3	2-1/8	1	1/8
36992	COIL	1 1/2	3-1/2	2-3/8	1-1/2	3/8

SPIN-N-LOK XT™ HOIST

1. Ideal for lifting and moving precast-slabs and pipe
2. Extended Stud provided to accommodate a variety of o material thicknesses
3. Star Base and nut provide secure fit

- Pivots 180° and Swivels 360° Under Load
- Material: High Tensile Alloy Steel
- Finish: Black Oxide
- Design Factor: Minimum of 5:1
- Magnetic Particle Inspected Per ASTM 1444

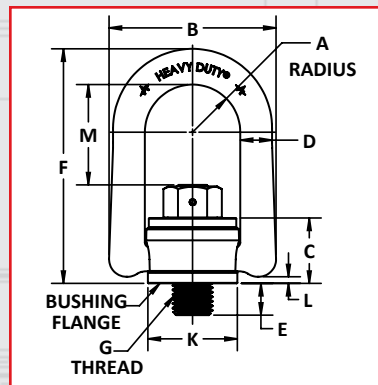


Part No.	Rated Load (lbs)	A	B	C	D	E +/- .12	F	G	Thread Type	H	I	M	Weight (lbs)
76915	10000	1.4	5.1	2.8	1	12	8 1/8	1	COIL	6	10	2.95	18.26
76920	10000	1.4	5.1	2.8	1	15	8 1/8	1	COIL	6	13	2.95	18.82

* Customized Threads Available Upon Request

HEAVY DUTY® ROAD PLATE HOIST RING

- Material: High strength 4140 alloy steel
- Range of movement: Swivel 360°, Pivot 180° Under Load
- Design Factor: Minimum of 5:1
- Meets manufacturing and design requirements of ASME-B30.26 and MIL-STD 209
- Magnetic Particle Inspected Per ASTM 1444
- Black oxide coated



Part No.	*Rated Load	A	B	C	D	E +/- .12	F	G	K	TL (ft-lbs)	M	Weight (lbs)
36660	†10,000	1.40	5.10	2.05	1.00	1	7.00	1 1/4-7	2.81	230	2.95	8.09
36665	†10,000	1.40	5.10	2.05	1.00	1 1/2	7.00	1 1/2-6	2.81	230	2.95	8.22
36670	†15,000	2.00	6.75	2.87	1.25	1	9.22	1 1/4-7	3.88	470	3.74	18.32
36675	†15,000	2.00	6.75	2.87	1.25	1 1/2	9.22	1 1/2-6	3.88	470	3.74	18.80