

# FLIP-FLOP HOIST RINGS

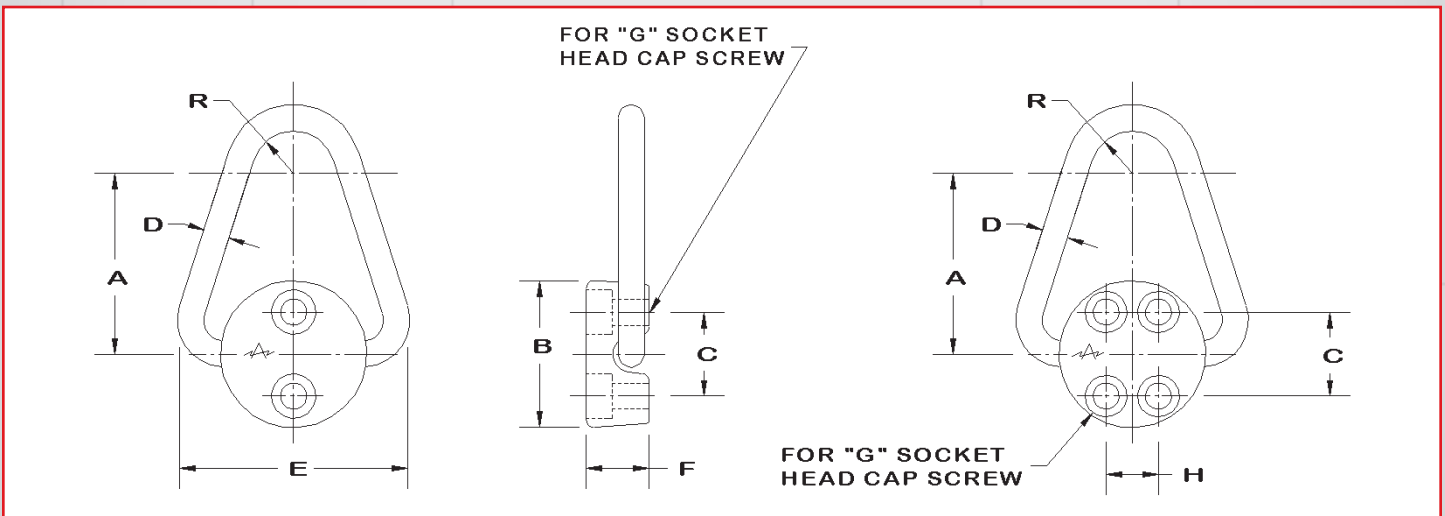
- Forged Chrome Moly Steel
- Heat Treated
- Black Oxide Finish
- Pivot 180° Under Load
- 6:1 Design Factor
- High strength screws are 100% Magnaflux Inspected
- Rings and bodies are Magnafluxed per ASTM 1444



Part No. †	Part No. (With Screws)	Rated Load* (lbs)	A	B	C	D	E	F	G	H	R	TL (ft-lbs)	Weight (lbs)	Weight With Screws (lbs)
34030	34030S	2,000	2"	1-3/4	1"	5/16	2-1/2	3/4	5/16 (2 PLCS)	0	1/2	4-7	.54	.58
34035	34035S	2,500	2-1/2	2-1/4	1-1/8	3/8	3-3/16	7/8	3/8 (2 PLCS)	0	5/8	7-10	1.02	1.07
34040	34040S	5,000	3"	2-5/8	1-1/2	1/2	3-7/8	1-1/8	1/2 (2 PLCS)	0	3/4	20-25	1.92	2.06
34045	34045S	12,000	4"	3-1/8	1-5/8	3/4	5-1/4	1-3/8	1/2 (4 PLCS)	1-1/4	7/8	20-25	3.94	4.10
34050	34050S	20,000	5"	3-5/8	2-1/16	1	6-3/16	1-7/8	5/8 (4 PLCS)	1-1/4	1	42-50	7.44	7.94

\*To obtain maximum load capacity, high strength screws must be used.

† Mounting Screws Not Included



**\*HIGH STRENGTH SCREW**

Part No.	Used P/N	Screw Thd	Screw Length	Weight (lbs)
23812	34030	5/16-18	1-1/4	.04
23813	34035	3/8-16	1-1/4	.05
23804	34040	1/2-13	2"	.14
23805	34045	1/2-13	2-1/4	.16
33645	34050	5/8-11	2-3/4	.50



**WESTECH RIGGING SUPPLY**

Call Toll Free: 800-442-7475

Call Us or Visit Our Stores:  
Monday - Friday, 8:00am - 5:30pm Pacific



Distributed By

Visit Us Online at: [www.WestechRigging.com](http://www.WestechRigging.com)

4140 West 11th Avenue  
Eugene, Oregon 97402

2439 McGilchrist St SE  
Salem, Oregon 97302



## Flip-Flop Hoist Ring SAFETY INSTRUCTIONS

### CAUTION: PRIOR TO USING ANY HOIST RING, PLEASE READ THE FOLLOWING FOR PROPER INSTALLATION AND USAGE.

As with all mechanical devices, regular inspection for wear and strict adherence to use instruction is necessary to prevent misuse failure.

- Despite the 5:1 safety factor, NEVER EXCEED THE RATED LOAD CAPACITY.

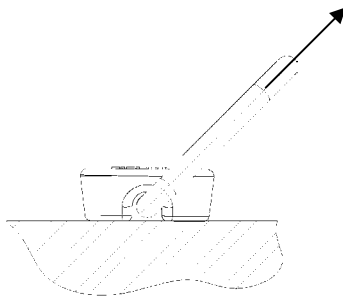
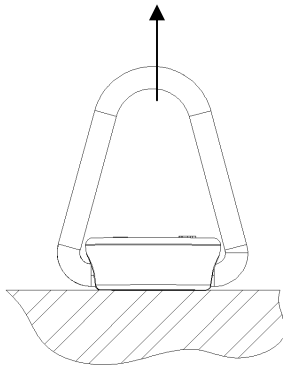
- Tighten mounting screws to recommended torque. Periodically check torque because screws could loosen with extended service.

Note: if weld mounting, weld must be performed by a certified welder

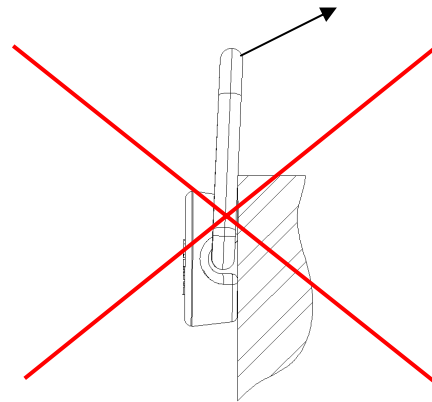
- Tensile strength of parent material should be above 80,000 PSI to achieve full load rating. For weaker material, consider through-hole mounting with a nut and washer on the other side.

- DO NOT APPLY SHOCK LOADS. Always lift in gradually. Repeat magnetic particle testing if shock loading ever occurs.

- After installation, always check that ring pivots freely 180°.



**CORRECT**

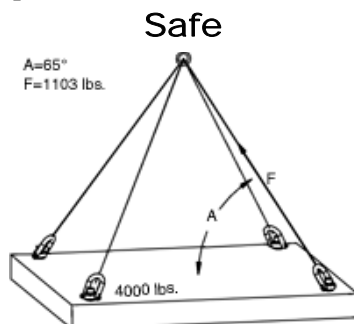


**INCORRECT**

**IMPORTANT!** The force on each hoist ring is not just the total weight divided by the number of hoist rings. The force will be greater at lower lift angles. Make sure load is evenly distributed. See below.

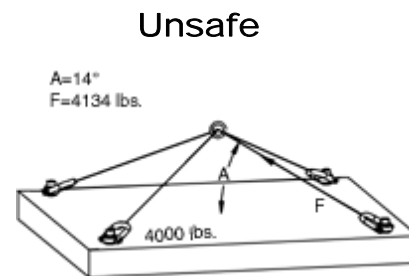
Formula with example data:

$$F = \frac{W}{N \sin A}$$



**Fig. 1**

A = 65°  
F = 4000 / 4 sin65° = 1103 lbs.



**Fig. 2**

A = 14°  
F = 4000 / 4 sin14° = 4134 lbs.

F = Force on each hoist ring  
W = Total weight = 4000 lbs.  
N = Number of hoist rings = 4  
A = Lifting angle

**WESTECH RIGGING SUPPLY**  
Call Toll Free: 800-442-7475

Call Us or Visit Our Stores:  
Monday - Friday, 8:00am - 5:30pm Pacific



Distributed By

Visit Us Online at: [www.WestechRigging.com](http://www.WestechRigging.com)

4140 West 11th Avenue  
Eugene, Oregon 97402

2439 McGilchrist St SE  
Salem, Oregon 97302